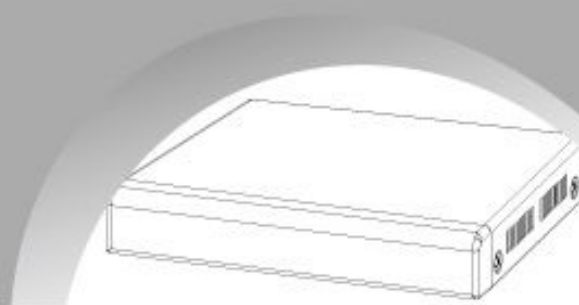


H.264 Digital Video Recorder

4CH/8CH/16CH

V4.1G

USER MANUAL



Content

Content.....	1
Chapter 1 Overview.....	3
1.1 Introduction.....	3
1.2 Packaging and accessories.....	3
1.3 Main features.....	3
1.4 Technical parameters.....	3
Chapter 2 DVR Introduction.....	5
2.1 Front panels.....	5
2.2 Rear panel and ports.....	6
2.3 IR remote control.....	7
2.4 Hardware installation.....	8
2.4.1 HDD installation.....	8
2.4.2 Connection to the camera and monitor.....	8
Chapter 3 Basic Operation.....	9
3.1 the Setup Wizard.....	9
3.2 System Login.....	9
3.3 Live View.....	10
3.4 Live control bar.....	10
3.5 Playback interface.....	12
3.6 Main Menu.....	12
3.6.1 Basic Setting.....	12
3.6.2 Backup & Playback.....	17
3.6.3 Upgrade & Maintenance.....	21
3.6.6 Advanced Setting.....	35
3.6.7 QR & Information.....	40
Chapter 4 Remote View.....	43
4.1 Remote view via IE browser.....	43
4.1.1 LAN.....	43
4.1.2 WAN.....	45
4.2 Via CMS.....	46
Chapter 5 Mobile Surveillance.....	51
Chapter 6 Q & A.....	57

Notes:

- The power supply of this DVR is provided through DC12V adapter, please check the power output before installation and ensure it can meet the requirements;
- Do not place the DVR at a place subject to rain and moisture;
- Do not install the DVR at a place subject to violent vibration;
- Do not install the DVR at a place subject to direct sunlight, and be far away from high temperature environment;
- The DVR should be installed in a space without much dust, and the environment should be kept clean and tidy;
- The DVR's back panel should be placed 15cm or more away from other objects or wall for cooling;
- The DVR should work under temperature, humidity and voltage according to its technical specifications;
- The space where DVR is installed should not be stored with corrosive chemicals that may produce volatile gases to avoid affecting the DVR's life;
- Proper grounding should be guaranteed during operation;
- The DVR shall be installed to ensure proper connection with other devices.
- Please buy HDD from official channel to meet DVR's long time and large data reading and writing requirements.

Statement:

- This manual only introduces basic operation.
- Products are subject to the real products and this manual is just for reference.
- Products update without further notice. Nuances of partial functions are permitted before and after updating.
- Please contact the Customer Service Department for the latest program and supplementary instruction files.
- This manual is applicable to various models, and the specific operation of each product is not listed here. Users can operate the DVR based on this manual for the actual products.
- We have tried our best to ensure the completeness and accuracy of this manual. However, due to the unstable environment and other reasons, the real value of some data may differ. If any problem or dispute arises, the company's final explanation will prevail.
- If carrying out operation not according to the instruction of this manual, the user shall bear the losses sustained.

Chapter 1 Overview

1.1 Introduction

This product is a consumer-oriented 4/8/16-channels CIF/Half-D1/D1 real-time network DVR and adopt the industry's most advanced SOC technology and standard H.264 encoding method, so that the image quality is higher, network transmission effect is better and system is more stable; the body is made under stylish appearance design and sophisticated manufacturing process, the 1U standard chassis is suitable for small-scale monitoring places such as shop, supermarket, residential, school, hotel, Internet cafe, family and other civilian sites where require more on video quality, network transmission and real-time playback.

1.2 Packaging and accessories

Following parts are included in the package:

- ⊙ One IR remote controller
- ⊙ A pair of remote controller batteries
- ⊙ One piece of product certificate
- ⊙ One piece of product instruction
- ⊙ One piece of SATA hard disk data cable(installed in the host)
- ⊙ One DC12V3A power adapter
- ⊙ Support HDD(already installed) and a set of mounting screws.
- ⊙ One piece of HDD power cable (already installed in the host)
- ⊙ One piece of CD.

1.3 Main features

- ⊙ Standard H.264 video compression format
- ⊙ 16-bit true-color semi-transparent graphical menu interface, menu options tip
- ⊙ A variety of recording modes: manual, timing, movement and alarm recording
- ⊙ Optimized four-channel simultaneous playback (single playback for eight-channel ones)
- ⊙ A variety of backup (USB flash drives, mobile hard disk, network)
- ⊙ One USB2.0 for data backup, one USB2.0 for the mouse operation
- ⊙ Multi-functional operation, recording, playback, monitor, backup and network transmission can be realized at the same time
- ⊙ Dual stream technology
- ⊙ Support network to implement multi-screen real-time browsing, parameter setting, copy or playback
- ⊙ Support mobile phone monitoring
- ⊙ Support event classification and precise time search and playback
- ⊙ Defaulted parameter value fast recovery
- ⊙ Flexible USB interface for mouse

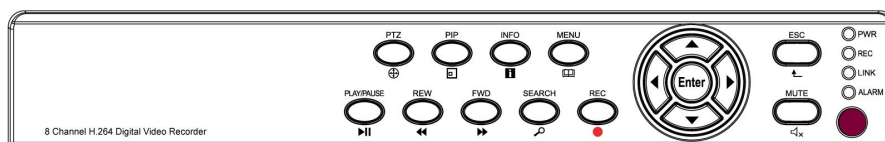
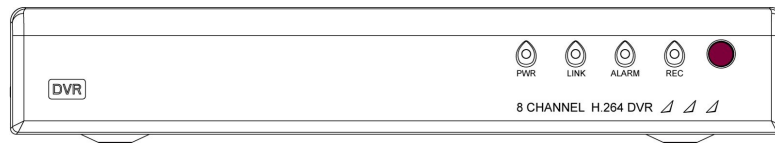
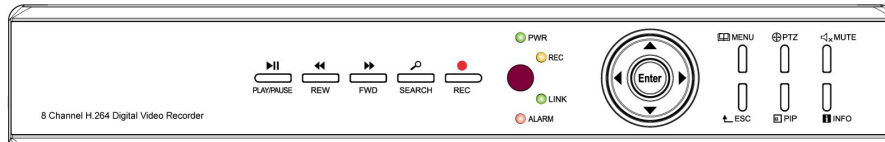
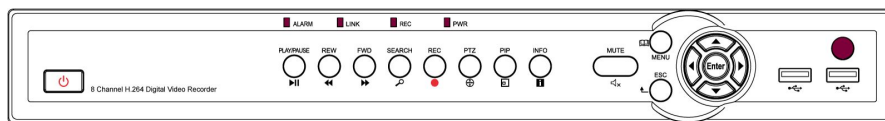
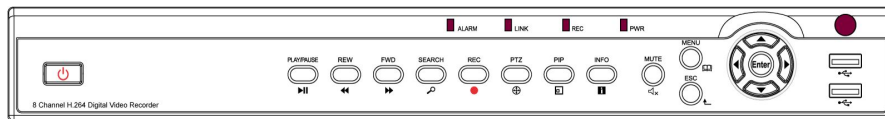
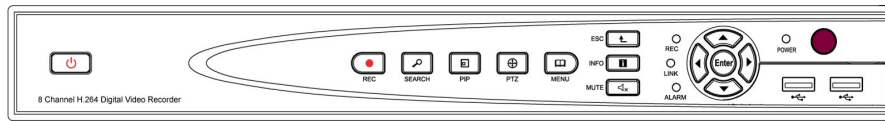
1.4 Technical parameters

Features	Description
Operating system	Embedded LINUX OS
Video compression	H.264
Video input	4/8/16 channels BNC
Video output	Support BNC, VGA and HDMI
Audio input/output	Without/1/2/4/8-ch input RCA ;without/1-ch output RCA (optional)
Alarm input/output	Without/4/8-ch input (optional);without/1-ch output(optional)
Display	1/4/9/16-channels

Multiplex operation	Live, recording, network, ,mobile phone surveillance simultaneously
Recording mode	Timer/manual/motion detection/alarm
Recording frame rate	PAL: 25fps NTSC: 30fps
Recording quality	Highest, higher,medium,low,lower,lowest
Recording resolution	CIF/Half-D1/D1 frame rate adjustable
Recording playback	1/4/8 /16 channels playback simultaneously(optional)
Recording backup	Support USB flash drives backup, moved hard disk backup, network backup, backup by files, backup by time
Action with Alarm	Support
Email alarm	Send pictures to the designated Email
FTP transmission	Support
PTZ control	Support
PTZ protocol	PELCO-D,PELCO-P etc
PIP	Support
Zoom	Support
HDD	Support 1 SATA HDD, capacity to 4T
Network and protocol	1 RJ-45 10/100M via Ethernet, support TCP/IP、DHCP、DNS、DDNS、UPNP 、NTP etc
IE browser	Support
Client software	Support
CMS	Support
Dual stream	Support (main and secondary interchange)
Group play	Support five users online access
Multi-language	Support
Mobile phone surveillance	Support windows/symbian/iPhone/blackberry/android operation system
QR code	Support
P2P cloud	Support
DDNS	Support domain name
Mouse interface	USB2.0
Backup interface	USB2.0
Remote controller	Support (Support controller ID matching)
User authority	Support multi-level user authority distribution
Power	DC12V 3A/5A
Working temperature	0℃-50℃
Working humidity	10%—90%

Chapter 2 DVR Introduction

2.1 Front panels

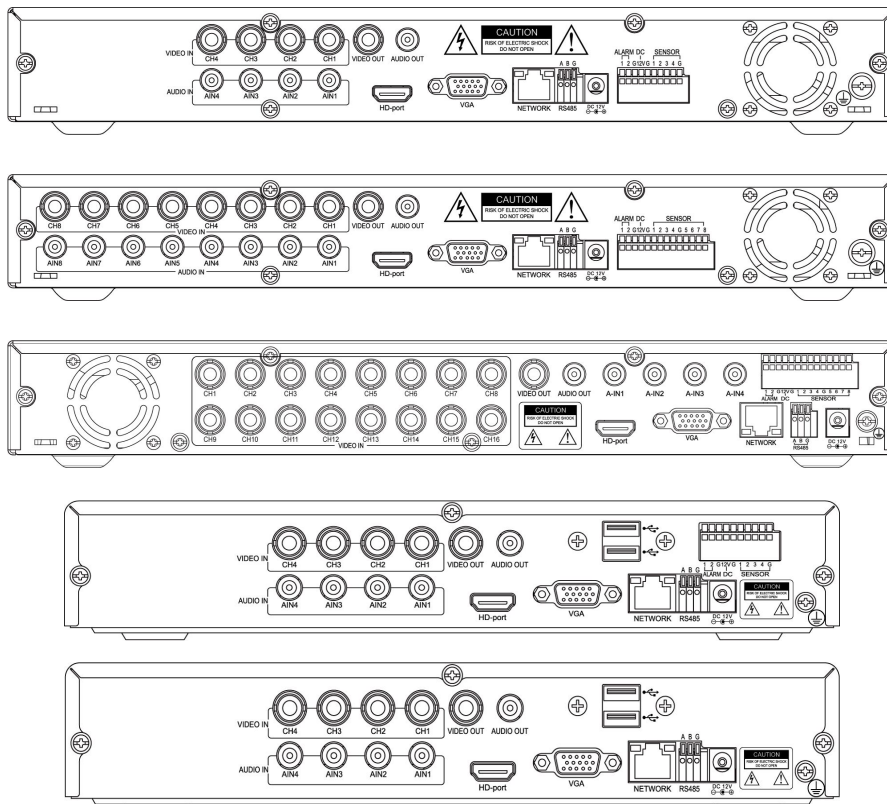


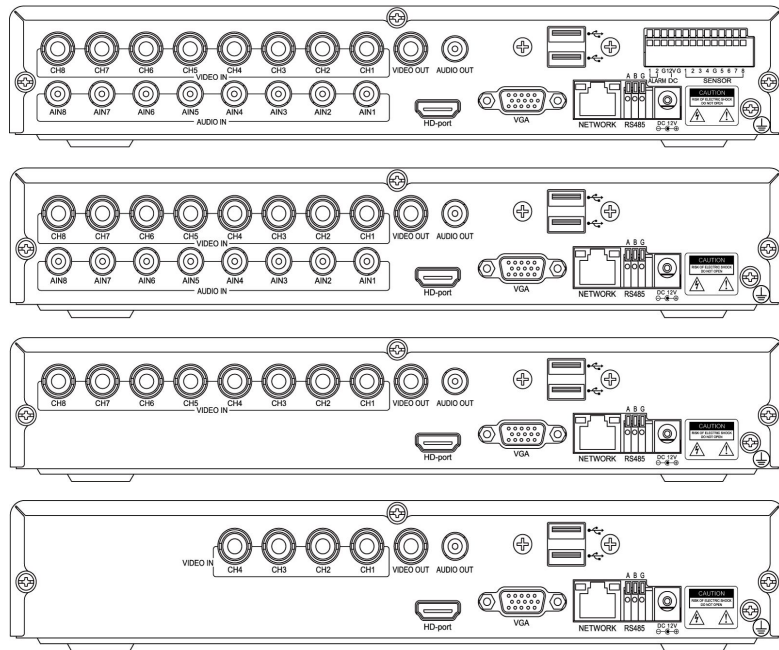
NO.	Tag	Name	Description
1		MUTE	Disable the sound output
2		INFO	Check the device system information
3		PIP	Display live images picture in picture

4		PTZ	Call the PTZ camera
5		PLAY / PAUSE	Compound button play and pause
6		REW	Rewind
7		SEARCH	Search the video file
8		REC	Start or stop the manual record
9		MENU	Enter the main menu(press it 15sec to switch VGA and CVBS operation menu)
10		ESC	Quit
11		USB	Connect the USB devices
12		POWER	Power switch button
13		DIRECTION	Move the cursor to right/left/up/down
14	Enter	Enter	Confirm the change(press it 15sec to restore factory default)
15		IR Receiver	IR remote receiver window
16	PWR REC LINK ALARM	STATUS	Indicate the running status


2.2 Rear panel and ports

Note: the real production maybe have some difference with this panels below.





Ports descriptions:

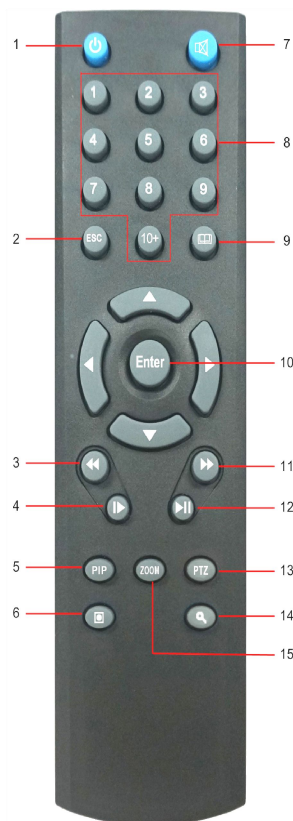
NO.	Name	Description
1	VIDEO IN	BNC connectors for analog video input
2	VIDEO OUT	BNC connector for analog video output
3	AUDIO IN	RCA connectors for analog audio input
4	AUDIO OUT	RCA connector for analog audio output
5	VGA	DB15 for VGA monitor
6	HD-port	To connect the HDMI high definition monitor(optional)
7	NETWORK	RJ-45 connector for Ethernet
8	RS485	To control the PTZ camera(A > +, B > -, G > Ground)
9	DC 12V	DC 12V power supply
10	ALARM	Alarm output(On-off switch output)
11	SENSOR	Alarm input(On-off switch input)
12		Ground

Note:

- 1, RS485 A should connect to PTZ data+, B to data-;
- 2, Recommend connecting the DVR housing to ground (PE cable).

2.3 IR remote control

The DVR can be controlled with the IR remote control. Ensure the batteries are installed before using.



NO.	Name	Description
1	POWER OFF	Shutdown the DVR
2	ESC	Quit the menu
3	FAST REWIND	Change the rewind speed
4	SETP	Playback frame by frame
5	PIP	Show video picture in picture
6	RECORD	Start/stop manual record
7	MUTE	Disable the sound
8	NUMBER	Switch the channel
9	MENU	Enter to the menu(press it 15sec to switch VGA and CVBS operation menu)
10	ENTER	Confirm an item (press it 15sec to restore factory default)
11	FAST FORWARD	Change the forward speed
12	PLAY / PAUSE	Play and pause when playback
13	PTZ	Move the PTZ camera
14	SEARCH	Playback the video
15	ZOOM	Enlarge the channel image

2.4 Hardware installation

2.4.1 HDD installation

- (1)Open the cover of the DVR, fix the HDD into the bracket;
- (2)Connect the HDD data and power cables to the HDD;
- (3)Tighten the screws to fix the HDD in the case;
- (4)Lock the cover with crews.

Note: Do not plug in or out the HDD when the DVR powered on.

2.4.2 Connection to the camera and monitor

Connecting the signal of camera with a BNC cable to the DVR video input, connect the signal of DVR video output with a BNC cable to the monitor (Please refer to the back panel figure). Connect the RS485A (+) and the B (-) respectively to corresponding DVR interface with wires, if camera is the PTZ which can be controlled.

Note: Please refer to the electric topology in the last page to connect the devices.

Chapter 3 Basic Operation

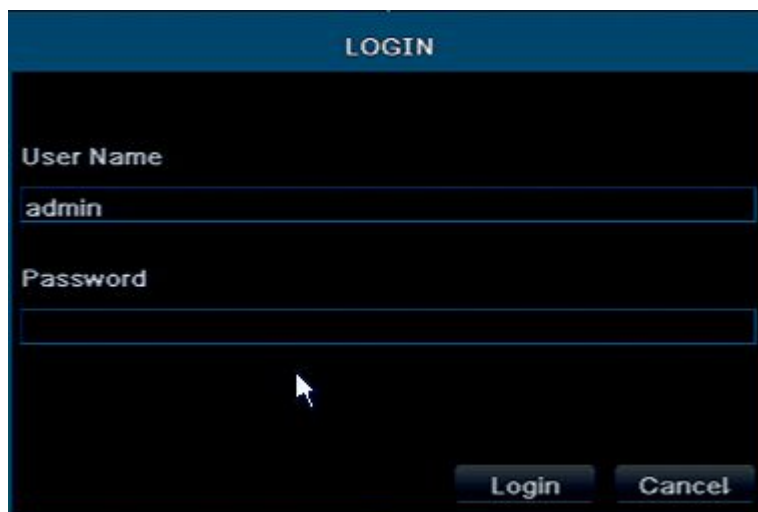
3.1 the Setup Wizard

1. Connect the DC 12V output plug to power port on the back panel of the DVR;
2. Connect the power supply plug to the outlet;
3. Switch on the Power button, (the “Power” light is on);
4. After system start up, start the setup Wizard;
5. This step you can configure the basic parameters, such as, device name, language, date time ,etc.
6. If the DVR will connect to the Internet via a router, the network parameters should be configured.
7. In the last step, you should format the HDD if you want save the video files.
8. After finished all the steps above and click apply, the DVR will start recording in normal. --End



3.2 System Login

the factory default user name: **admin**; password: **0000 0000** (eight Zero)

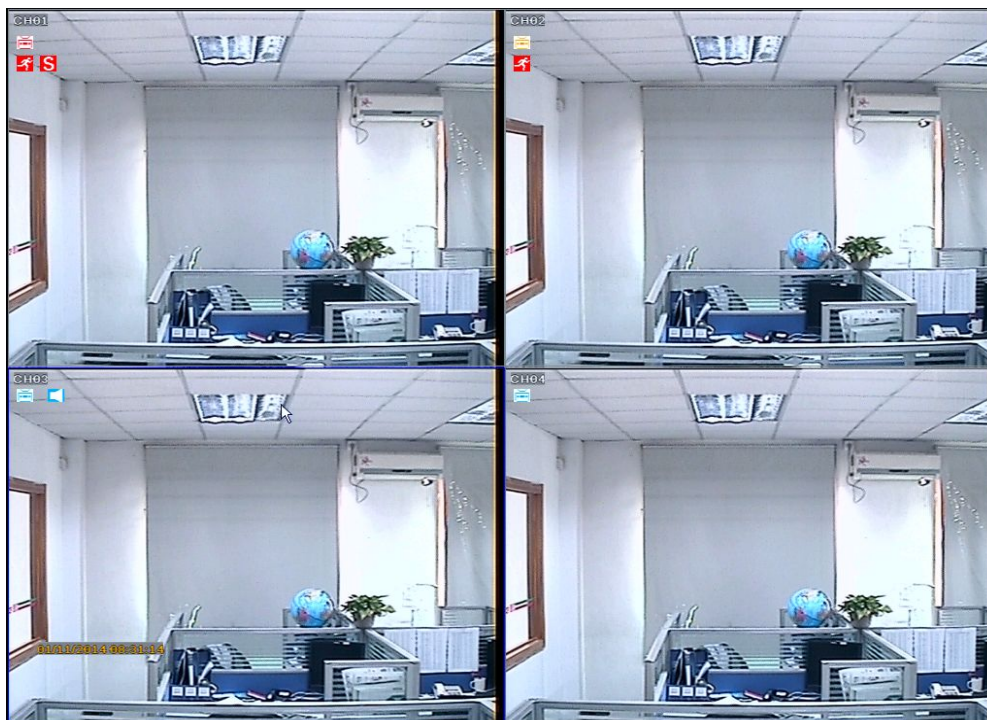


3.3 Live View

The green icon: means normal record.

The red icon: means alarm record ("S" means the alarm sensor has been triggered).

The yellow icon : means motion detection (red human figures means the motion detection function is on)



3.4 Live control bar

Just by one right click the mouse, a control bar will pop up on the screen (as following picture shows):



Main menu: click and enter to the Main Menu;

Split mode: click and select different display mode; it has 1x1,2x2 display mode etc;

PIP: The screen display a main picture, meanwhile, it display a small picture of the others channel at the bottom, (display picture in picture);

Sequence patrol: enable multi-camera auto sequence in Live View mode;

Digital zoom: enlarge the image in selected single channel;

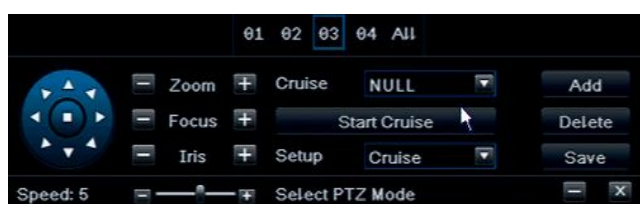
Sound: adjust or disable the audio output;

PTZ: control the PTZ dome camera; set the preset direction , cruise line and track,

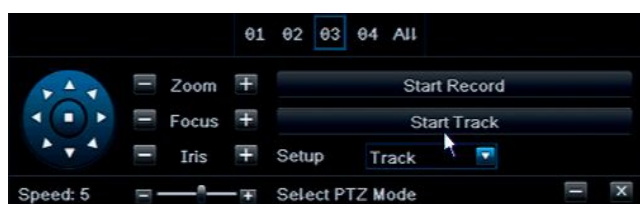
1. **Preset point setting:** need to move the PTZ camera in setting the preset point, suggest to set 5 or more direction.



2. **Cruise line setting:** click “Add”, then you can set the residence time on each preset point. Then the PTZ will start to cruise




3. **Tracking:** Click start record, then click the direction key and select the required rotation path. After it recorded, click Start Track, it will follow the recorded path.



Capture: make a channel screen-shot and save to HDD; and the picture can be search in data retrieval.

REC: start / stop recording manually;


Quickly review: start a playback of the record file.

Click , then left click and hold the mouse button and drag, the live control bar can be drag to any position.

3.5 Playback interface



3.6 Main Menu

Click Menu button  and enter, it' s including seven function for the DVR: Basic setting, Backup & Playback, Upgrade & Maintenance, Record & Schedule, Alarm & Schedule, Advanced Setting, and QR & information.

3.6.1 Basic Setting

Basic setting is including 6 options: System, Date & Time, DAT, Live, Main Monitor, and Mask.

3.6.1.1 System

Click System, as following Picture shows, in this window, user can set up the Device Name, and do Video Format, Password Check, show System Time, Startup Wizard, Max online Users, Screen Resolution, Language, Auto Logout setting etc.



The following are the Names and definitions:

Device Name: The system name shows in the Client Software or CMS.

Video Format : Two kind of Format: Pal and NTSC. User can select it according to the recorder.

Password Check: When apply this function, the user need to type in the User name and Password to do system setting operations.

show System Time: To select whether display live Time tamp on screen

Startup Wizard: Click and it will shows the related information of the Wizard.

Max online Users: set up the Max quantity of online user.

Screen Resolution: The resolution of the live view. Optional: VGA800*600、VGA1024*768、VGA1280*1024 and HDMI (1920*1080) .

Tips:Please connect to relevant Device to control,while switch between the BNC and HDMI

Language: Select the Menu language

Screen Saver (S): User can set the time interval of the screen saver (30s, 60s, 180s, 300s), If there is no operation ,the system will auto logout and back to login.

3.6.1.2 Date & Time

In this window,user can set up and adjust the system Date, System Time, Time zone.

The factory default is GMT timezone, Please select the right timezone in the drop-down column (for example:China GMT+8:00).

Click "Default", the system will restore default setting; Click "Apply", it will save the setting above.



3.6.1.3 DST

In DST window, select DST, Time offset, Mode, from Month/Week/Date/Time etc.

Click “Default” ,the system will restore default setting; Click “Apply” ,it will save the setting above .



3.1.6.4 Live

Click “Live” and enter the setting window like Picture :

Click Channel name, a virtual keyboard will pop up. Click “Shift”, it can switch the input state between Capital letter and Chinese, user can rename the Channel.

Click and select the channels in Live interface, then click “Setting”, it will enter “Image Adjust” interface:

User can adjust the Brightness, Hue, Saturation, and Contrast;

Click “Default” it will restore factory default settings.

Click “OK” and save the setting above.

User can set the same color parameters to all Channels at once, just by clicking “ALL” ,enter and do the settings.

Click “Default”, system will restore factory default setting; click “Apply”, it will save the setting above.



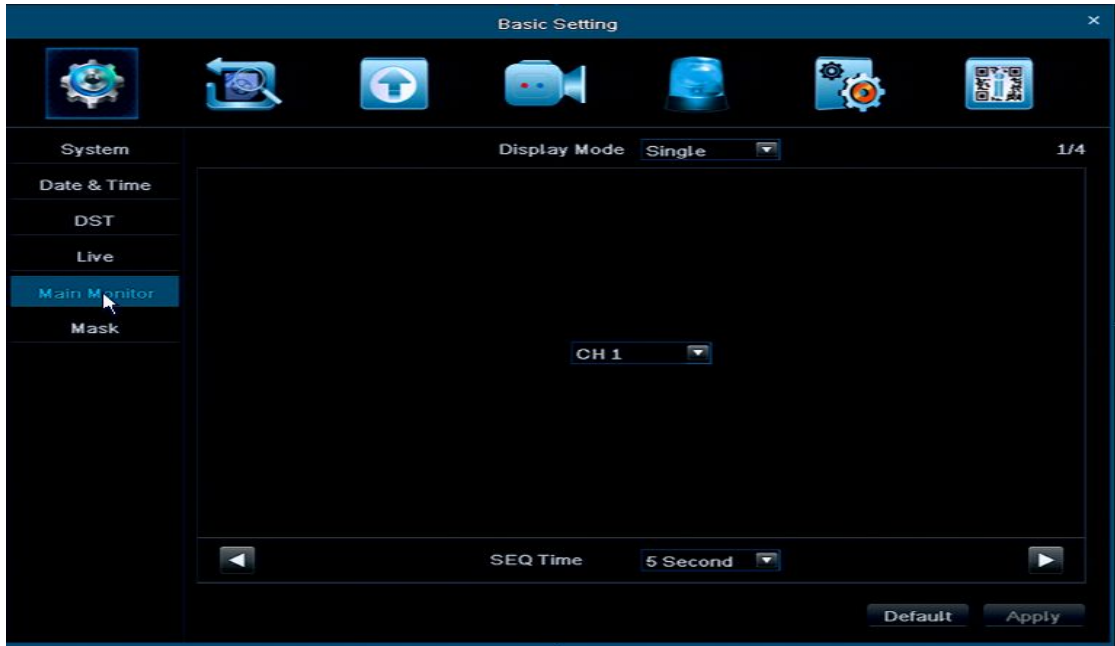
Image Adjust:



3.1.6.5 Main Monitor

Display Mode options : 1×1、2×2、1A5

SEQ Time (Second): Live view switching interval from channel to next channel



3.1.6.6 Mask

Mask: User can mask at most three area in live view pictures.

Mask Area Settings: Click “ Setting”, enter live view picture, left click and hold the Mouse button and drag the mask area, as the picture shows below, Click “ Apply” and save the setting.



Mask Area Setting



3.6.2 Backup & Playback


3.6.2.1 Playback

System support Playback By Time, By Even, By File, and Image. Click and enter data retrieval.

By Time

First Step: Click Playback By Time, as following Picture shows:

Second Step: select the Channel and display mode, the highlighting date in calendar means it has record.

Third Step: Select the date you want to playback, click "Search", select the start time and click  button to start playback. The selected Time-sheets will show in blue.

Note: The Rows are Hours, the Columns are Channels.

When the monitor resolution is set to VGA800*600, the time the search interface will show a hide button, click the button can be expanded.



By Event

First Step: Click Playback By Time, as following Picture shows:

Second Step: Click "Search", the event information will be displayed in the event list box, double click the event file to playback.

Third Step: User can select the date, channel, click "Motion", "Sensor" or "All" to search.

Note: When the monitor resolution is set to VGA800*600, the time the search interface will show a hide button, click the button can be expanded.



By File

User can lock and delete File. The file can not be hidden or deleted once it locked, but it can be deleted while formatting.

First Step: Click Playback By Even, as following Picture shows:

Second Step: Click "Search", the event information will be displayed in the file list box.

User also can select the date, channel to search.

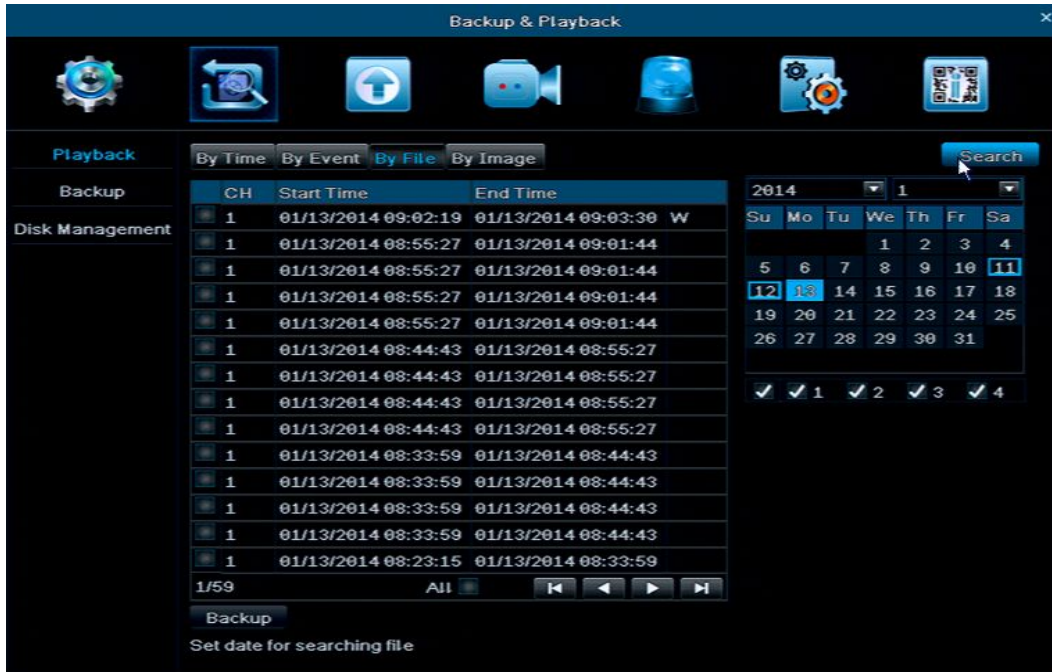
Lock: Select one file and click "Lock", the file can not be deleted or covered.

Unlock: Select the locked file and click "Lock", the file will be unlocked.

Delete: Select the unlocked file and click "Delete", the file will be deleted

Third Step: Click "All", user can lock, unlock or delete all the selected file.

Fourth Step: Double click the unlock file to playback.



By Image: User can do live capture by selecting time and channel, and can do the operation like delete, lock, save to the images. Click the direction key to view the images. The system default image storage is 2000, if over 2000, system will auto cover the old image. Double click the image to playback the record.



3.6.2.2 Backup

System support backup the file by USB Device , and remote backup by Internet
 First Step: Insert the USB storage device, and enter the data backup interface, as picture shows below:

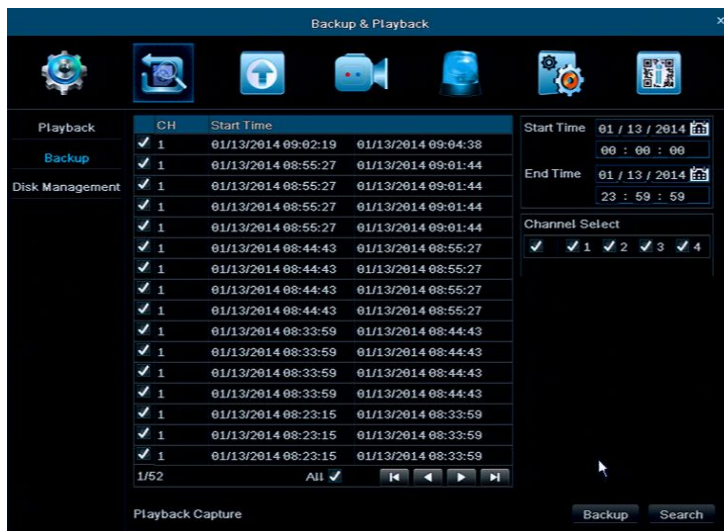
Second Step: Select the Start Time and End Time, the Channel, click "Search", the data information will be displayed in the list box

Third Step: Click one data or click "All"to select, then click "Backup", an Backup Information Window will pop up.

Forth Step: In Backup Information window, user can check the file information. Select the

Storage Media ,Save file Type, click “Start”to start backup.

Note:When the monitor resolution is set to VGA800*600, the backup interface will show a hide button, click the button can be expanded.

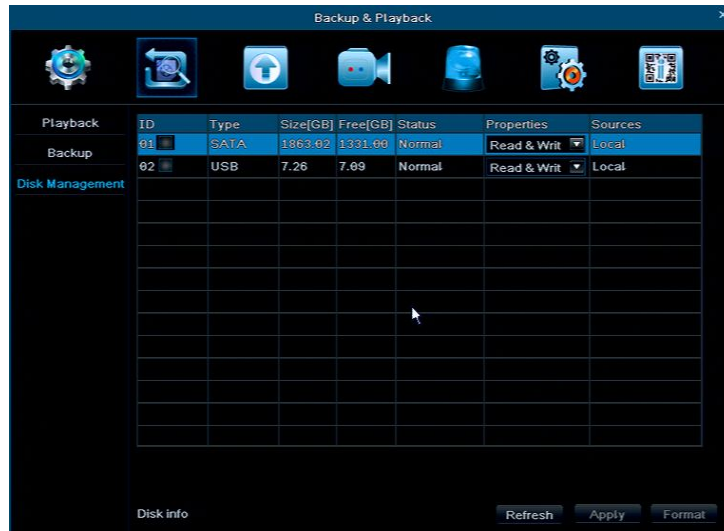


Select the file and click “Backup”, will pop up a window as picture shows below, user can check the size of the select file, and select the file type to save, like: DVR, AVI, WAVE three kind of format.



3.6.2.3 Disk Management

Here you can see the state of the connected Hard Disk and U disk, and do the formatting operation.



3.6.3 Upgrade & Maintenance

3.6.3.1 Upgrade

Simple upgrading procedures:

1. format the U-disk (FAT32)/ or empty the U-disk
 2. Unzip the zip file
 3. Put all the firmware file without folder into U-disk.
 4. insert the U-disk into DVR
 5. power off the DVR
 6. power on the DVR & restart
 7. then the DVR will Auto Detect the firmware and upgrade the DVR.
- P.S: while the DVR upgrading pls don't turn off the DVR, it takes few minute.



3.6.3.2 Import / Export

User can export the Data to USB storage device for backup. and import the Data from USB storage device to DVR.



3.6.3.3 Maintenance

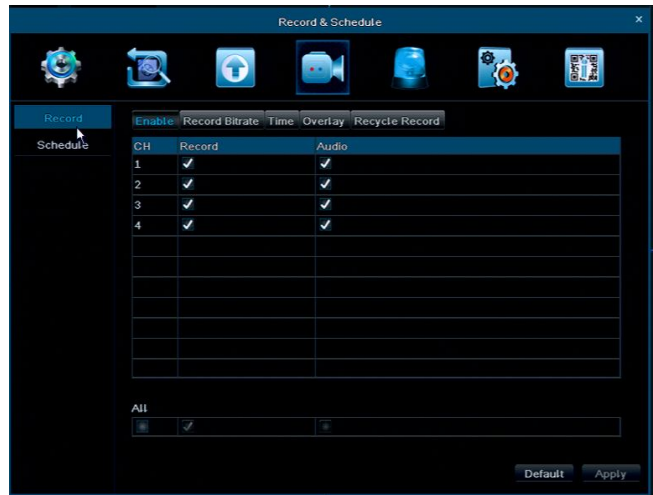
Including Factory setting, Logout and Shut Down.



3.6.4 Record & Schedule

3.6.4.1 Record

Click "Record", will shows as following Picture:



Enable: Click “Record”, “Audio” of the Channel, or Click “All” to do the same setting.

Record Bit rate: User can select the Resolution, fps, Encode, Quality, and Max Bitrate, and do the same setting to all channels by clicking “All”. Click “Default”, system will restore the default settings; click “Apply”, it will save the setting above.

Note: If the fps setting is over than the Max resources, the fps will be auto adjusted.



Time:

- Pre Record Time:** The record length before the event, such as before Motion detection, Alarm event etc.
- Post Record:**The record length after Alarm,Optional time length: 10/15/20/30/60/120/180/300 second;
- Expired:** The effective period of preservation for the record file, When it beyond the setting time, the record file will be auto deleted.

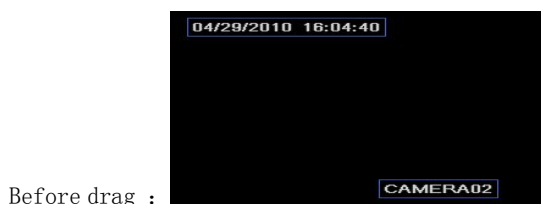


Overlay: The Camera Name and the Time Stamp on the Live view pictures.

Click Camera Name, Time Stamp, "Setting", In live view, user can drag the Camera Name and Time Stamp to any place, as picture shows below:

User can do the same Time Stamp setting to all Channel at once, just by clicking "All" and enter to set the place.

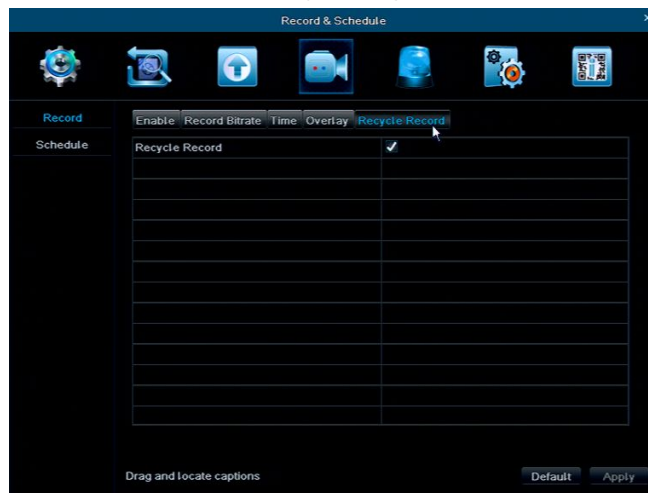
Click "Default", system will restore the default settings; click "Apply", it will save the setting above.



Recycle Record: Click “Recycle Record”,when the HDD is full, DVR will keep recording and auto cover the old record file.

Click “ Default”, system will restore the default settings; click “Apply”, it will save the setting above.

Note:The Record file Size is depending on the quality, fps,and the record resolution, the higher the Parameters is, the more memory storage it need



3.6.4.2 Record Schedule

Record Schedule includes 3 sub-manus: Schedule(Time record), Motion detection record and Sensor record.

Time Record: the row lines means the seven days a week, and the columns means the 24 hours a day, User can set the time by dragging the mouse, the blue area means selected, the gray area means unselected.

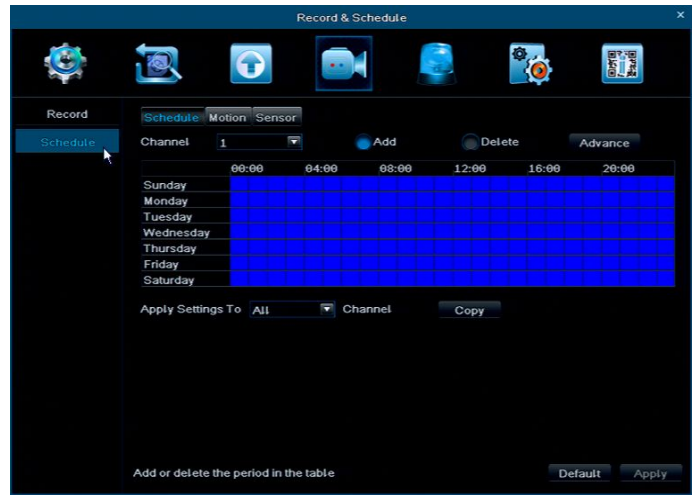
Select the Channel, double left click the mouse,and edit the weekly plan, as the picture below, Click “Add”to add the record schedule of that day; Click “Delete”to delete the selected schedule.

Note: Left click the mouse to drag the time period can quick add the schedule

Copy: 1.

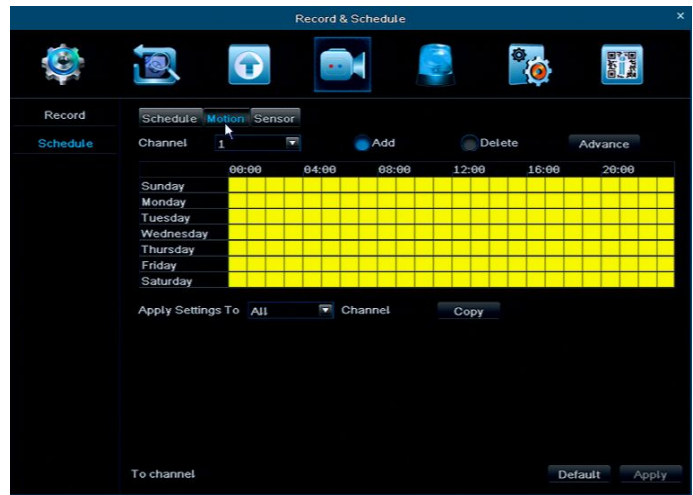
1.User can copy the appointed date schedule to the other days. Click “ Apply” and save the setting above.

2.User also can apply one channel’s setting to another channel or all channels, just select the channel and click ”Copy”to apply. Click “ Default”, system will restore the default settings; click “Apply”, it will save the setting above.



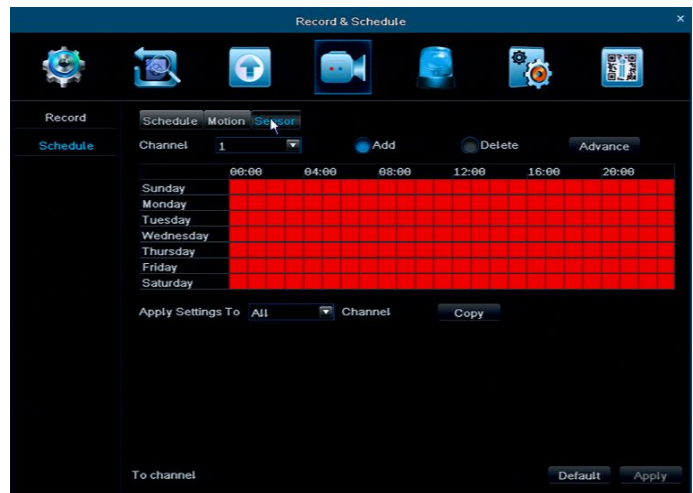
Motion Detection Record: it's the same setting way as Time Record, for more information, please refer to Time record above.

Note: The Motion schedule default setting is all selected, and it shows in yellow.

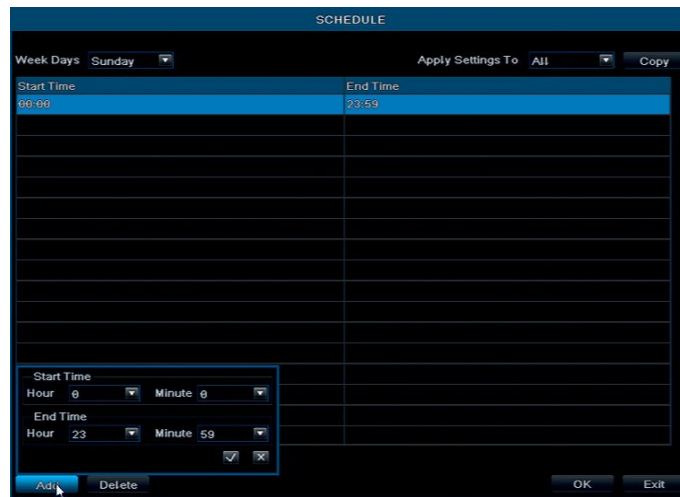


Sensor Record: it's the same setting way as Time Record, for more information, please refer to Time record above.

Note: The Motion default schedule is all selected, and it shows in Red.



Advance Setting: User can set the actual date and time .



3.6.5 Alarm & Schedule

It includes 5 sub-manus Motion, Video Loss, Sensor, Other Alarm, and Alarm Out Control



3.6.5.1 Motion

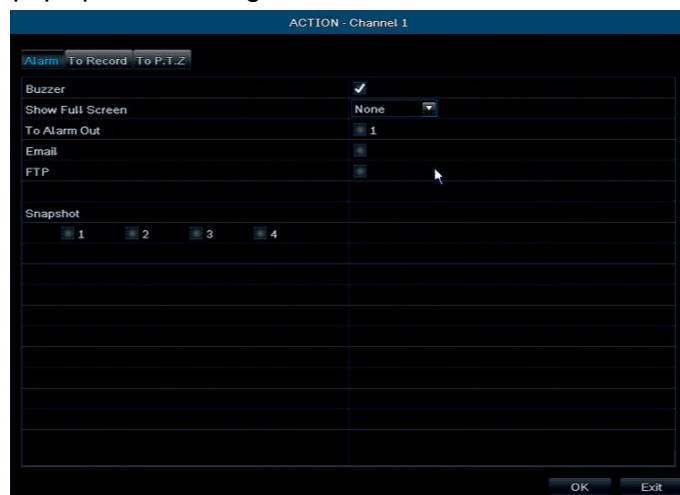
It includes 2 sub-manus: Motion and Motion Schedule

Motion: Enable the Motion Alarm, Set the Alarm Continue Time, Action and Area.



Click "All" ., "Enable" to enable motion alarm to all channel, or select the needed Channel
 Continue Time: After the Motion, the continue record time length, it can be set according requirements.

Action: Click and pop up the following window as below:



Buzzer: Click "Buzzer" , it will buzzer while it detect the motion

Show Full Screen: A full screen will pop up while it detect the motion

To Alarm Out: Click, and it will enable sense the motion.. Click "OK", it will save the setting above. Click "Exit"to exit the window.

E-mail: Click, when the alarm is triggered, the system will send the alarm information to the specified E-mail, such as Event, capture, device name, device ID etc.

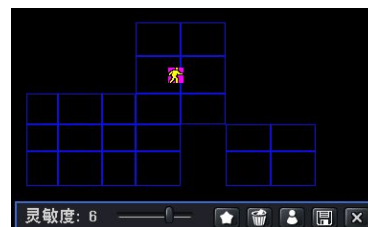
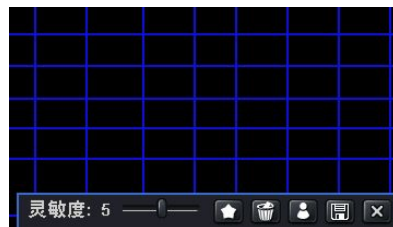
FTP: Build a FTP sever in LAN PC, when it has motion alarm, system will send the Snapshot to computer specify Directory





Snapshot : Select the Channel, when it has alarm event, system will auto save the snapshot to HDD, if "E-mail" is clicked, it will send the Snapshot to the specified E-mail ID or FTP Sever.


To Record: Click the need Channel and "OK" to save the setting above,. Click"Exit" to exit the current interface.



To P.T.Z:Set the Alarm Type and No., when there is alarm event, the PTZ Camera will record the event at the alarm point at the first time.
 Click “OK” to save the setting above, click “Exit” to exit the current interface..
 User can apply the same setting parameters to all channels, just by clicking “All”,enter to “Alarm Handling”.

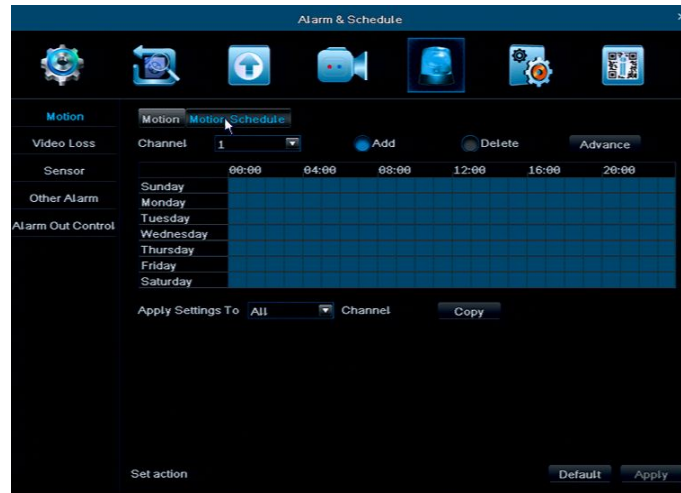


Motion Area Setting: Click “Area”, a window will pop up, as the picture below
 Set the sensitivity level(1-8), default level is 4, the higher the value is , the greater the sensitivity. Click  to select all area as Motion Detection Area,; Click  to delete all selected Area,; Click  to the sensitivity level; Click  to save the settings; Click

 to exit the current window.

Motion Schedule: it's the same setting way as Time Record, for more information, please refer to Time record above.

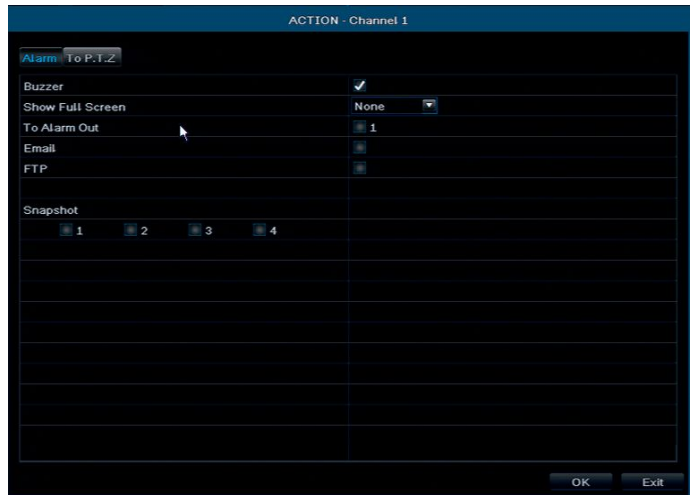
Note: The Motion default schedule is all selected ,and it shows in Blue.



3.6.5.2 Video Loss



Click “Action”, it will pop up the window as below:



The trigger setting of “The Alarm” and “To PTZ” in Video lost are the same as in motion detection. User can apply the same parameters of video lost to all Channels by clicking “All” for corresponding setting. “Default” means recover default setting; “Apply” means save above setting.

3.6.5.3 Sensor Alarm

Sensor alarm includes 3 sub-menu : Basic, alarm handling, Sensor Schedule.

Basic:enable sensor alarm channel, chose alarm type according to alarm trigger type : “NO” or “NC”

User can apply the same alarm type parameters to all channels by clicking “ALL” .

“Default” means restore factory setting, and “Apply” means saves setup above.



Alarm handling : chose the alarm continue time ,,and lick “Action”



Buzzer: when event triggered, Buzzer will work.

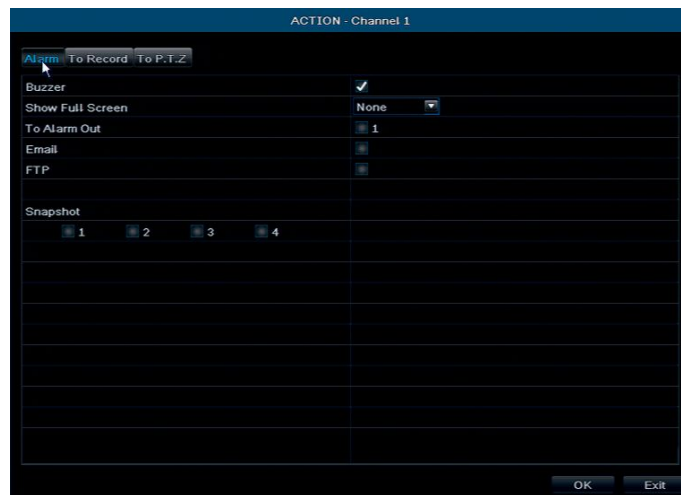
Show Full Screen: A full screen will pop up while it's triggered.

To Alarm Out: The alarm will be triggered to the appointed alarm output.

Email: If alarm triggered, the relevant information, like alarm event, captured pictures, device name, device ID, etc will be send to appointed email box.

FTP: Build a FTP sever in LAN PC, when it has motion alarm, system will send the Snapshot to computer specify Directory

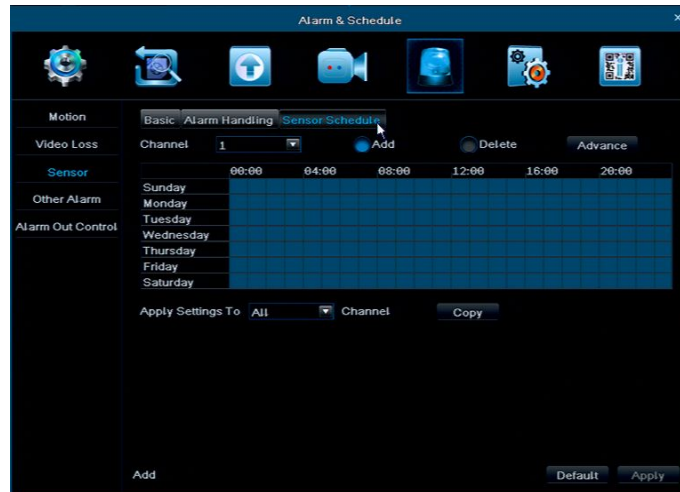
Snapshot: Select the Channel, when it has alarm event, system will auto save the snapshot to HDD, if "E-mail" is clicked, it will send the Snapshot to the specified E-mail ID or FTP Sever.



To Record: Select the Channel and click "OK" to save the setting above, Click "Exit" to exit the current interface.

To P.T.Z.: Same setting method as Motion part.

Sensor Schedule: The Sensor Schedule Setting way is most the same as Time Record, Please refer to the Record Schedule



Note: The Sensor record schedule default setting is all selected ,and it shows in blue.

3.6.5.4 Other alarm

The “ Disk Full ” in Alarm type means if the disk capacity is less than the set of Disk Shortage Alarm, relevant prompt will be shown at the bottom right of screen; IP confliction means when 2 or more than 2 PC share the same IP address in the same network segment, alarm will work after setting up the buzzer alarm and trigger alarm; Select “Disconnect”---Click “Buzzer” or “Trigger” , The system will buzzer or send the relevant alarm tips while the internet disconnect.

Select “Connection Problem” , user can do Buzzer, E-mail and Alarm Trigger setting. When the HDD is disconnected, the alarm will be triggered. Click “Default”, the system will restore the factory setting,;click “Apply” it will save the setting above.



3.6.5.5 Alarm Out Control

Sensor alarm includes 3 sub-menu : Relays, Alarm out Schedule, Buzzer.

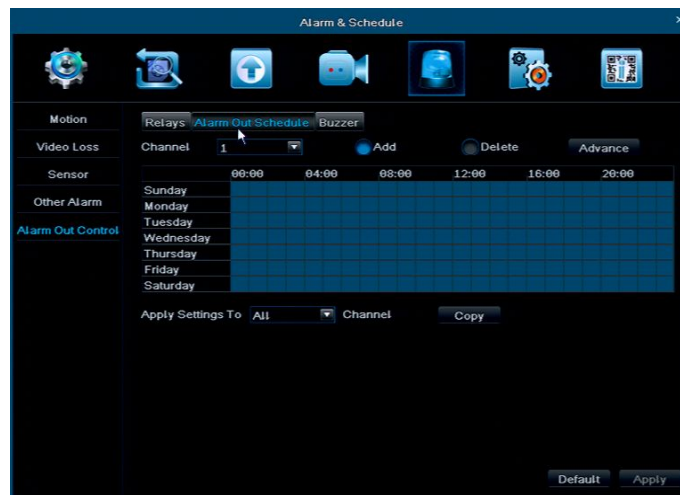
Relays: In this column, set the “Alarm out name”,and select the Alarm Continue Time (means the time intervals between two alarm action), user can apply the same alarm setting to all the channel by clicking “All”.

Click “Default”, the system will restore the factory setting,;click “Apply” it will save the setting above.



Alarm out Schedule: Alarm out Schedule Setting way is most the same as Time Record, please refer to the Record Schedule

Note: The Alarm Out Schedule default setting is all selected, and it shows in blue.



Buzzer: In this interface, click :Buzzer”, and select the “Continue Time”



Note: The “Buzzer” must be clicked, or otherwise it won’t buzzer.

3.6.6 Advanced Setting

It includes 8 sub-manus: Network, E-mail, DDNS, FTP, Sub-stream, PTZ, User Admin, and Block / Allow List.

Network

HTTP Port: Default port: 80, if it is changed, when using IE browser to do remote surveillance, need to add new port after the IP address. For example: if you reset as 7840, you need to type http://192.168.2.133:7804 instead of http://192.168.2.133.

Media Port: for CMS,, Mobile App, default setting : 9000

UPNP:Click “UPNP”and enable the function, user can visit the DVR through WAN (Manual port forwarding is suggested.)

Network Type: Including :STATIC, DHCP, PPPOE, and 3G.

If select STATIC, it need to set IP address, Subnet Mask, Gateway, preferred DNS Server and Alternate DNS Server.

Note: The DVR and the router must in the same network. For example: The Router IP is 192.168.1.1, then the DVR IP must be 192.168.1.xxx, the Gateway is 192.168.1.1.

If select DHCP, The device will automatic dispose and set the IP address, Subnet Mask, Gateway, preferred DNS Server and Alternate DNS Server etc.

If select PPPoE, user need to enter Broadband or dial-up user name and password, save and restart the system, DVR will will auto obtain an IP address.

If select 3G, user need to enter the 3G type (CDMA2000 or WCDMA) ,save and restart the system, DVR will will auto obtain an IP address.



E-mail

SMTP Server/ Port: you can find out E-mail SMTP port in the internet
Click “SSL Check”, enable to set the E-mail SMTP server (Like Gmail).

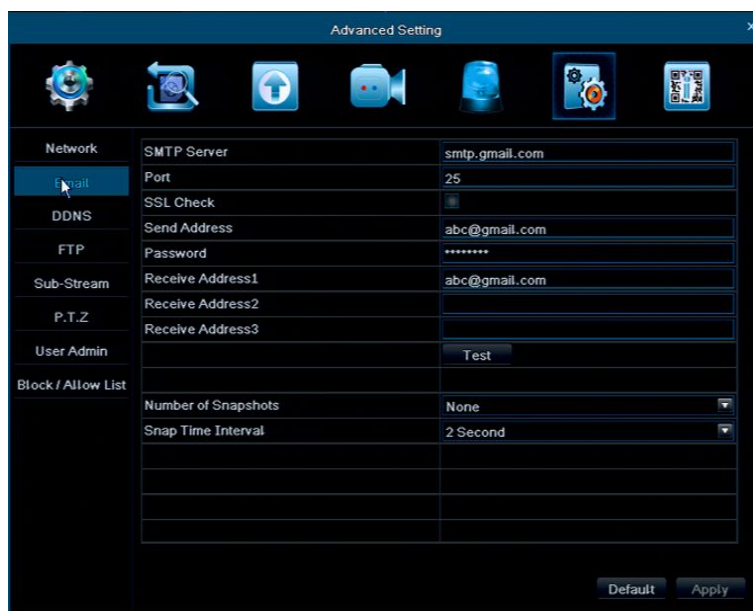
Send Address/ Password: Sender’s E-mail ID and password.

Receive Address: user can enter three different E-mail Address.

Click “Test”to verify E-mail.

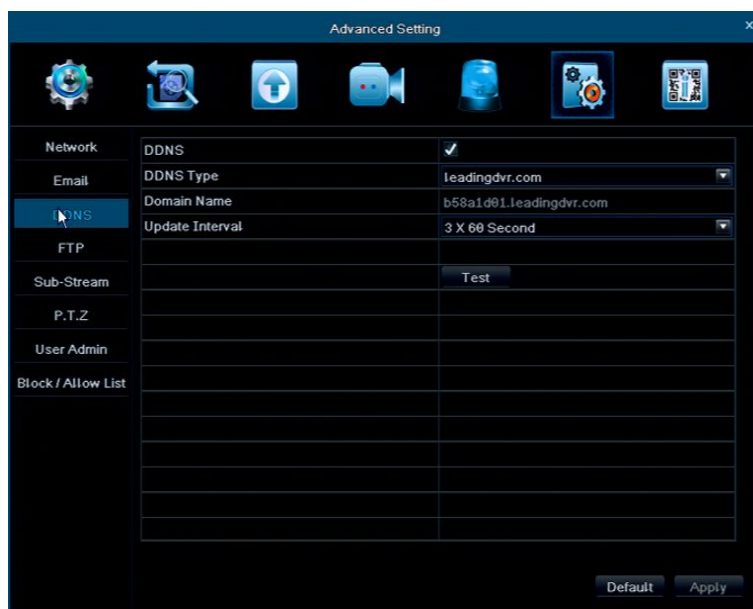
Number of snapshot: Click and enable to send the the snapshot as attached file by E-mail.

Snap Time interval: Set the Time Interval between two snapshot.



DDNS: User can set the WANIP address , ORAY , 3322 IP and Domain Name etc. Click “DDNS”, and select the recommended DDNS Type: leadingdvr.com, the device will auto obtain an Domain Name, User also can use the other Domain Name, but it need to register on the website .

Note:When visiting by Domain Name, User need to do port forwarding setting in router, and do HTTP and server port mapping., or enable the DMZ host in the router, and the IP as the DVR IP address.



FTP: this function is similar to the SMTP Server, build a FTP server by LAN computer, set user name and password. Add computer LAN IP address, Port in the DVR, and set the Remote Directory, after setting, then the snapshot can be sent to specify Catalog in computer



Sub-Stream: user can adjust the Resolution, fps, Encode, quality and Max Bitrate setting to a single channel, or click “All” to adjust the setting to all channels. Click “ Default”, system will restore the default settings; click “Apply”, it will save the setting above.

Note: after select the resolution and fps, system will shows the remaining CIF fps.



PTZ: After connect the PTZ to DVR and enable, user can set the Address, Baud Rate and Protocol, only they match the PTZ, then can connect the PTZ Camera to DVR successfully.

Address: The supported address range is 1~255, the PTZ address can be set manually on Dome Camera.

Baud Rate: Each PTZ has a fixed factory Baud rate, while it connect to the DVR, the two Baud Rate must be consistent.

Protocol: Each PTZ has a protocol, while it connect to the DVR, the two protocol must be

consistent.



User Admin: Use the user name to login the system and has all the operating right, Administrator can add and delete Non-admin account, change all the account passwords, including administrator's, and set the Permissions right to non-admin account



Add User



Permission setting: set the Permissions right to non-admin account according to needs.



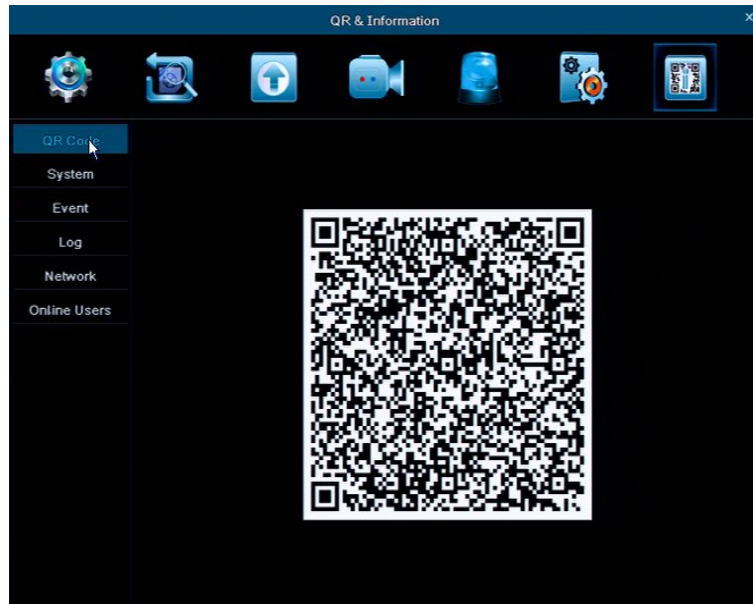
Block/ Allow List: to block or allow the computer user in a segments to visit the DVR. Click "Block list",and set the initial IP address and end IP address, the computer users in this segments can not visit the DVR; if click "Allow List",set the segments, the only allow these users to visit the DVR.



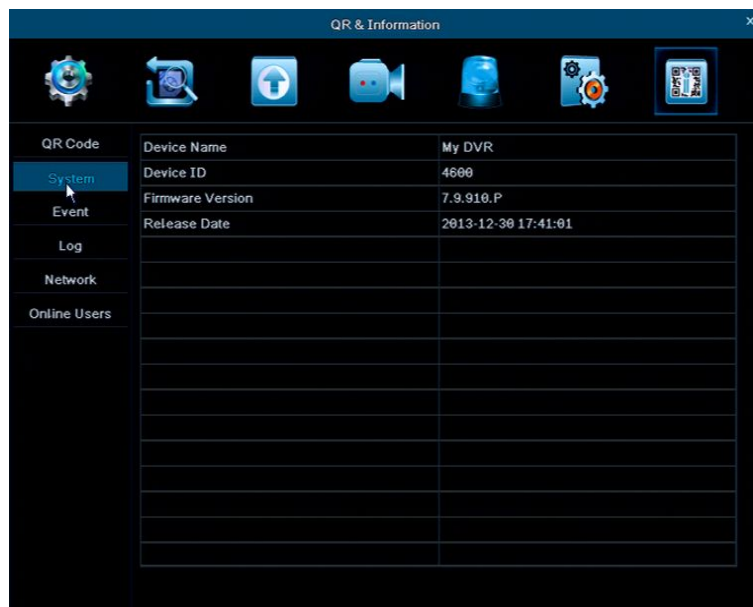
3.6.7 QR & Information

3.6.7.1 QR Code

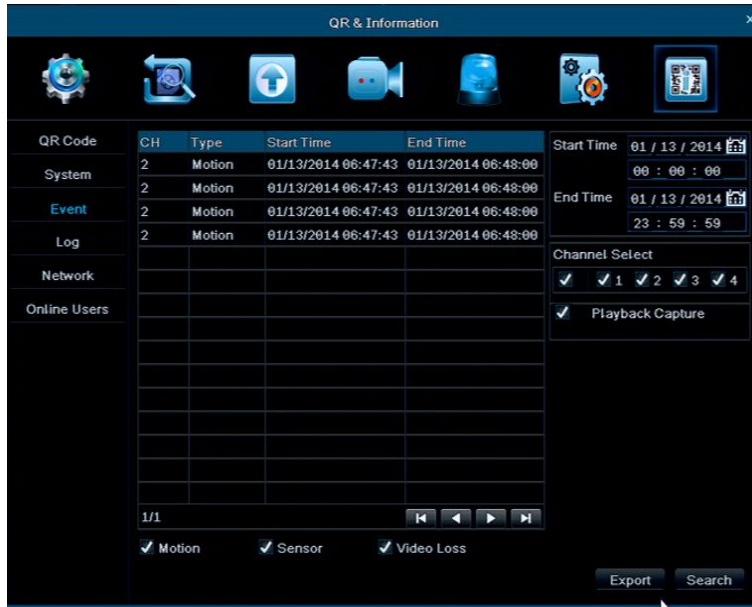
The QR code Image can be scanned by Mobile phone. If the mobile phone didn't install a surveillance APP, can use other mobile scanning software to scan the QR Code to connect to the download address (Android & Apple), and download a free Mobile App. If it already install surveillance software (Mobile App), can scan the UID (P2P) to realize mobile live view.



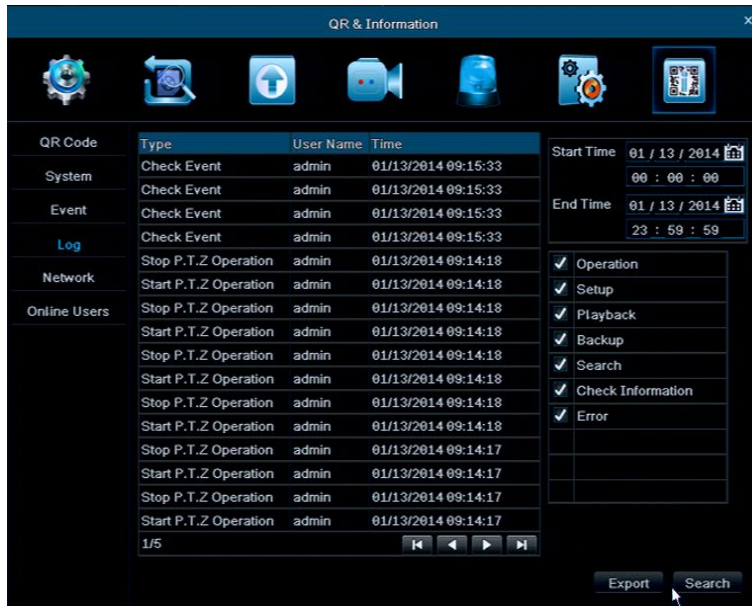
System: user can find the Device Name, Device ID, Firmware Version and Release Date.



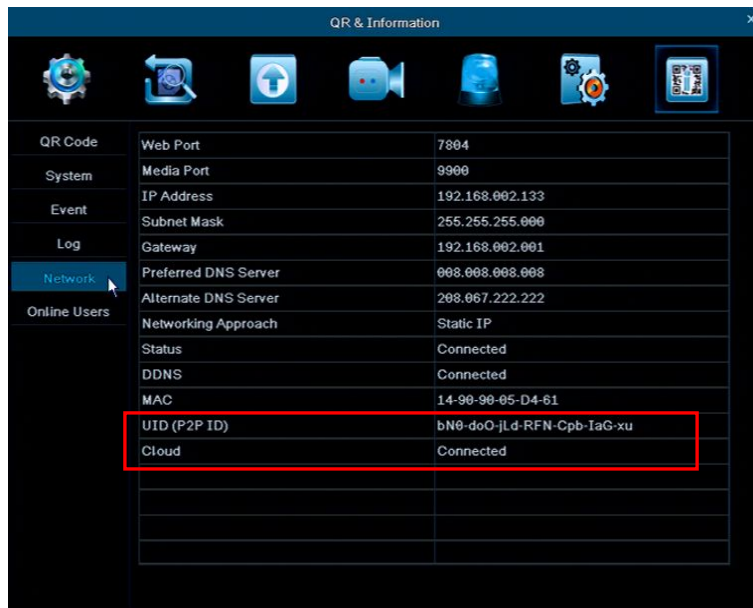
Event: user can search all the events here like: Motion detection, Sensor Alarm, Video loss



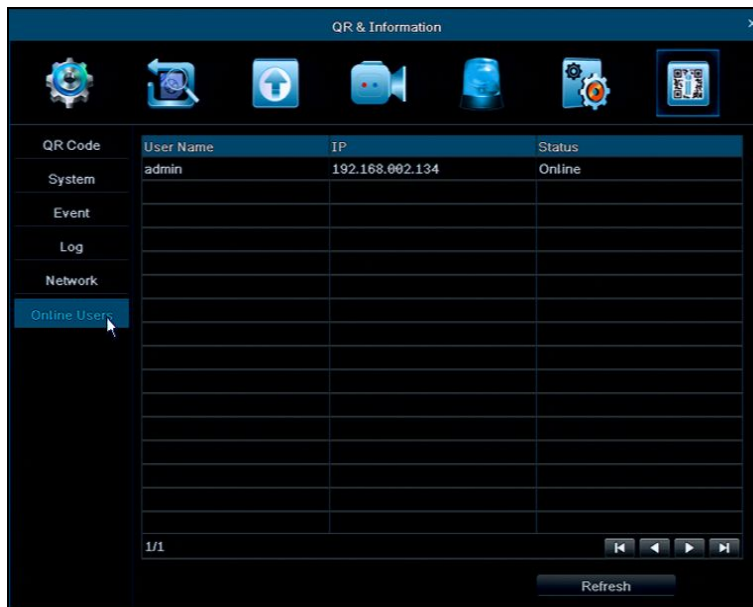
Log: User can check all users' device operation (including administrator)



Network: user can check the device port, IP Address and P2P (UID) information etc, also can check the Cloud status in this column.



Online User: User can check the PC port and APP visitors list in this column.

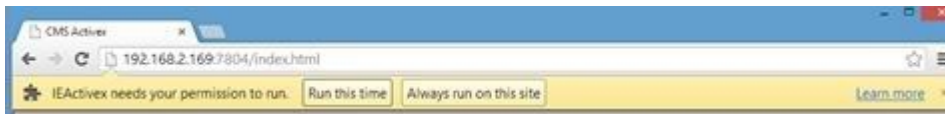


Chapter 4 Remote View

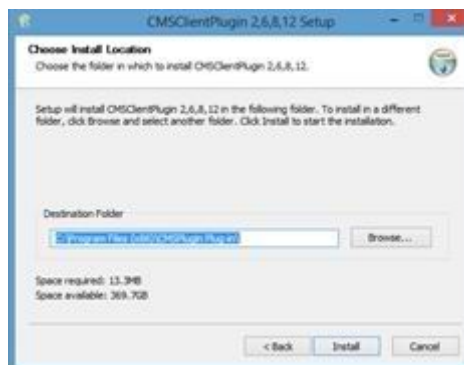
4.1 Remote view via IE browser

4.1.1 LAN

When DVR connect to the Router, firstly, check the router IP address, generally, the IP is 192.168.1.1 (192.168.1.254), then enter the network control setting of the DVR, and enter the IP Address and Gateway (Router IP), the IP address must in the same segments with the router. For example: Router IP is 192.168.1.1, the DVR IP set as 192.168.1.X。 After finishing the setting, open the IE Browser, and enter the DVR IP address: http://192.168.1.X, Web port, then click “Enter”, and it will download the IE Active-X control (IE Browser must allow to download the Active-X control, for more detailed operation, please refer to appendix 1)



after complete download, a dialogue window will pop up, as the Picture:



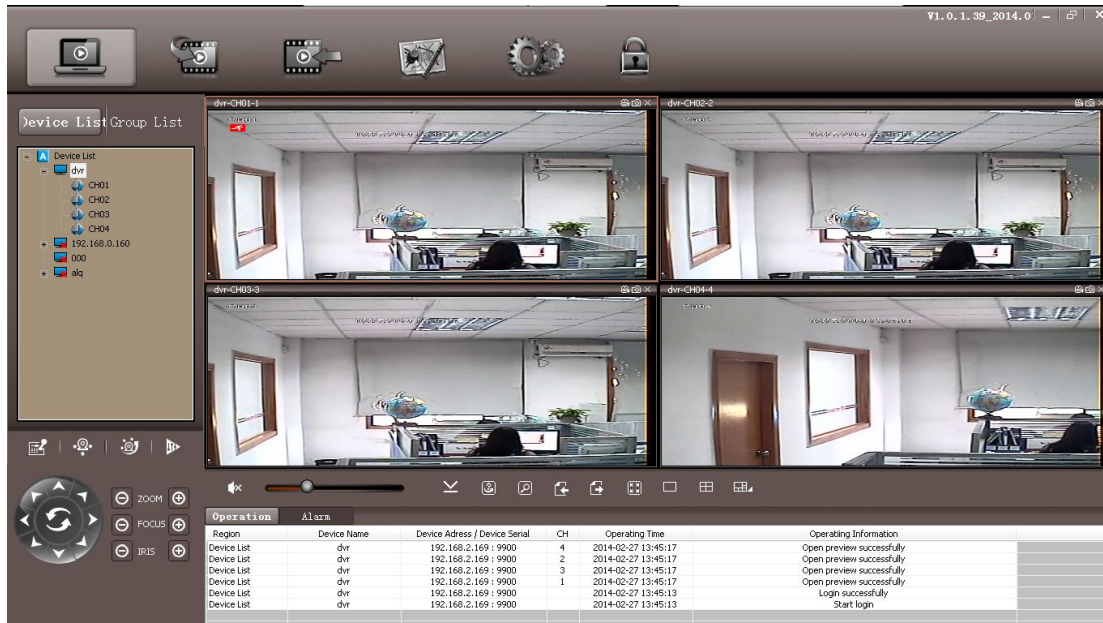


there are two kind of login way in Login window: IP Login and P2P Login.

1) **IP Login:** The default User name is “ admin”, Password: “0000 0000”, Device port is the same as Media port. Click “Login” and enter the live view.

2) **P2P Login:** P2P ID can be found in the DVR (QR & Information Column), The default User name is “ admin”, Password: “0000 0000”, Click “Login” and enter the live view.

Live view :



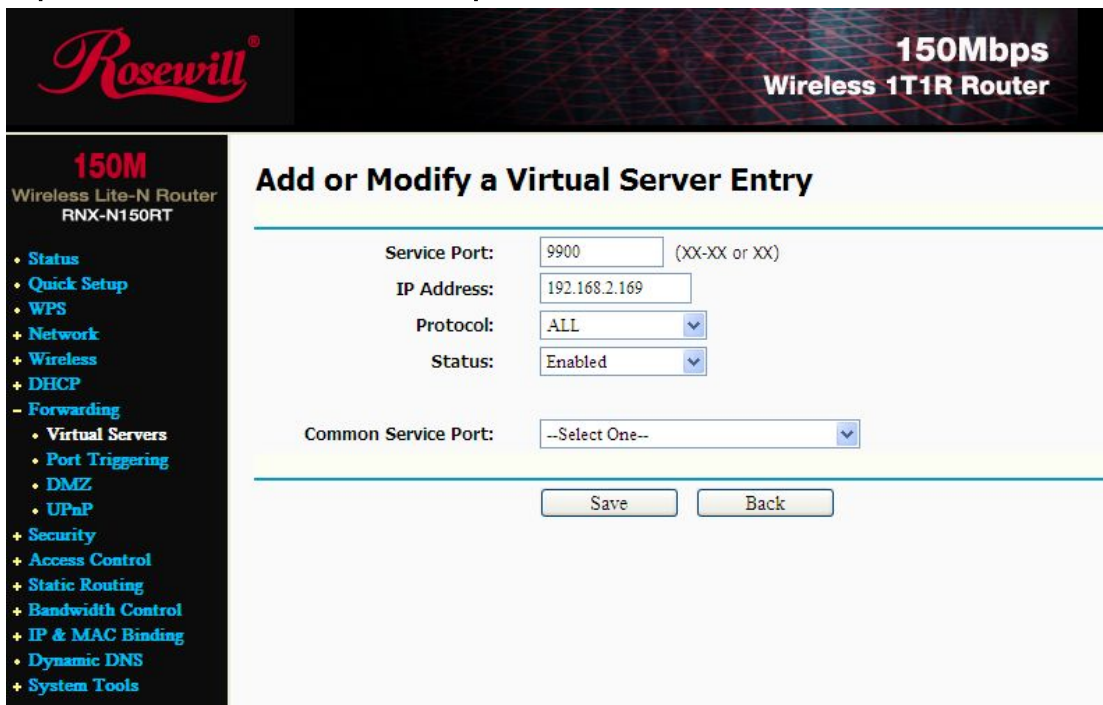
4.1.2 WAN

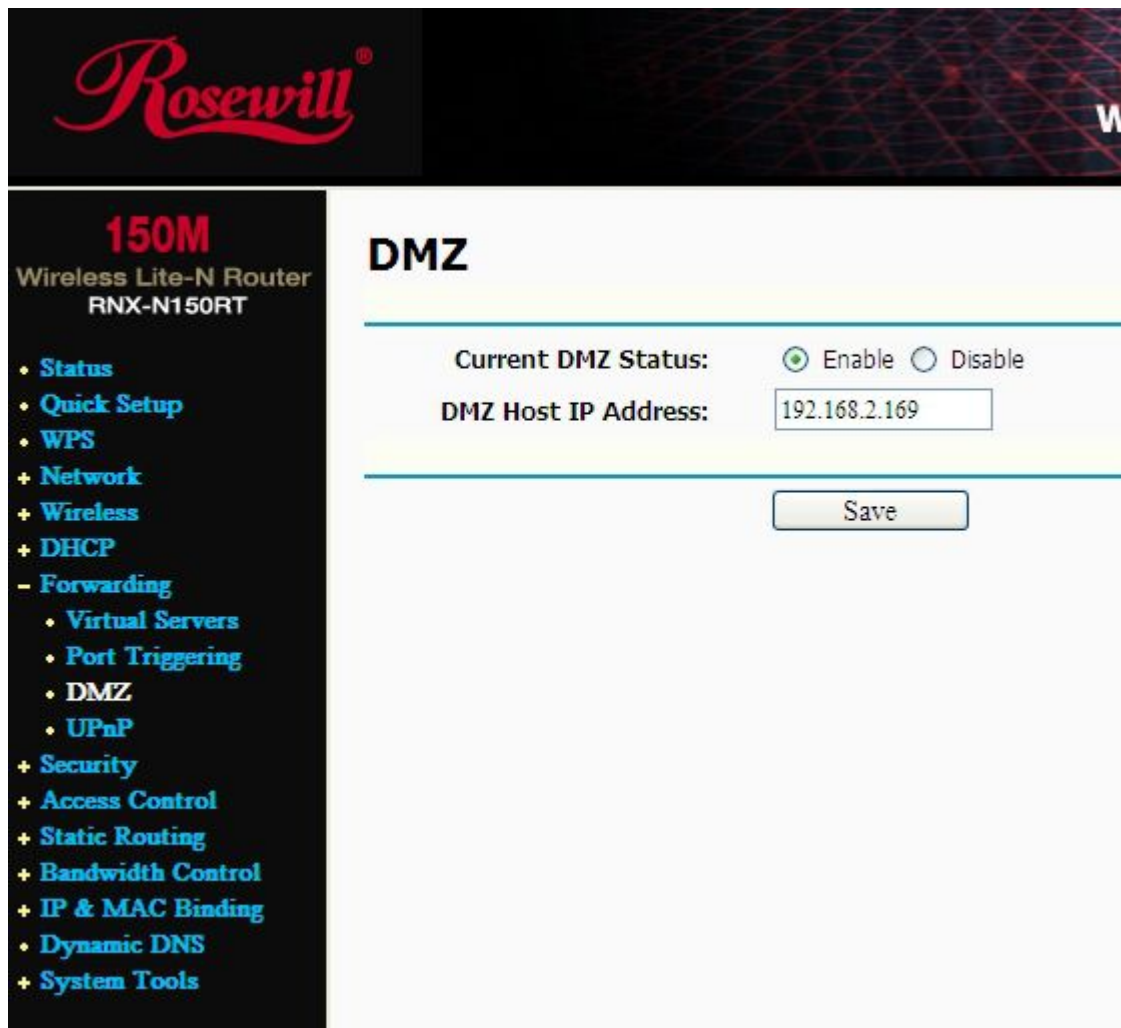
1. Via Router

Step 1: Please refer to LAN setting above.

Step2: After confirm the LAN connection, user need to do port forwarding in the router, as the the picture below. Each DVR need two port forwarding : Web & media port (user also can add the LAN IP Address to DMZ, and different router has different setting way, please refer to the router user manual).

After port forwarding, check the WAN IP Address in "Status" of the router, and add the WEB port via WAN IP to visit the DVR. For example: Visit via <http://210.21.229.138:WEB Port> or <http://Domain Name:WEB Port>.





Step 3: Because the changing WAN IP Address is not convenient for visiting, user can visit via Domain Name. Enter Main Manuel---Advanced Setting ----DDNS---Click DDNS ----Select the Domain Name :**leadingdvr.com**。 Just enter: http://Domain Name:WEB Port to visit the DVR.

4.2 Via CMS

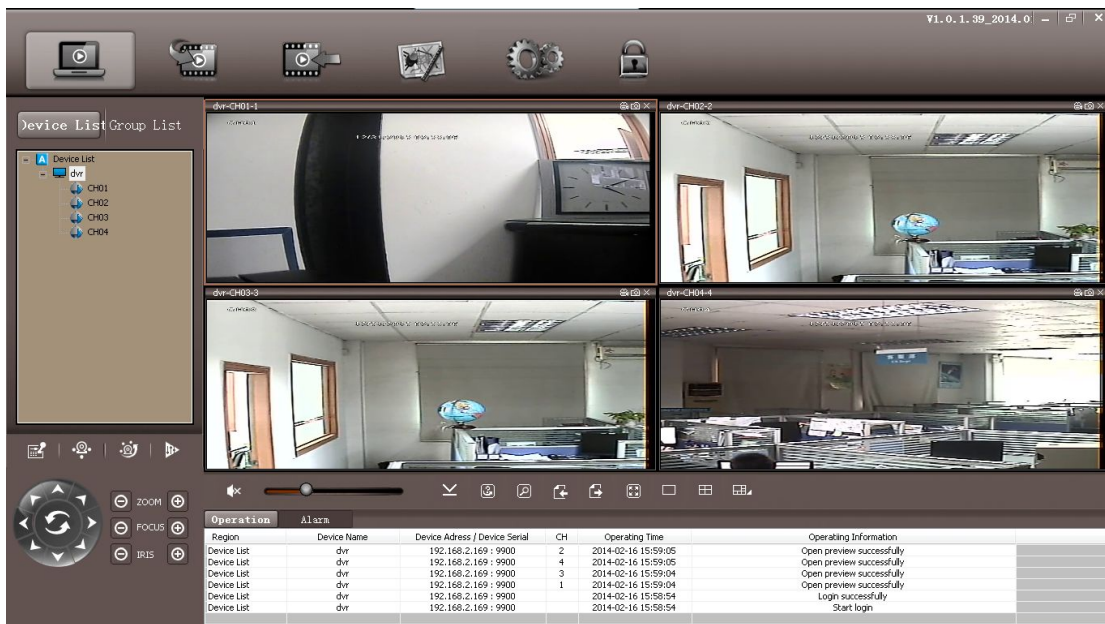
First, please copy the PC CMS from the software disk and install, for the first running, you need to register administrator and set the Password. As the picture below:



After registered, then you can login the CMS



Live View :



Add Device: right click the Device List, click “Add Device”, and will pop up a window as picture below. There are two kinds of Login Type: IP Login (visit via DDNS), and P2P Login (visit via UID)

1. IP Login: Need IP Forwarding via IP

The screenshot shows a dialog box titled "Add device" with the following fields and values:

Logon Type	IP	Device Name	192.168.0.160
Device IP	192.168.0.160	Device Port	9000
P2P ID			
Device User Name	admin	Device Password	*****
Auto Login	Disable	Device Type	new sdk

Buttons: OK, Cancel

Enter the Device Name,

Device IP : Enter the "IP Address" or "Domain Name" ;

Device Port: Enter the "Media Port", and the Factory Default is 9000

Factory Default User Name: **admin**, and Device Password: **0000 0000**

2. P2P Login: No need Port Forwarding via UID











The screenshot shows a dialog box titled "Add device" with the following fields and values:

Logon Type	P2P	Device Name	192.168.0.160
Device IP	192.168.0.160	Device Port	9000
P2P ID			
Device User Name	admin	Device Password	*****
Auto Login	Disable	Device Type	new sdk

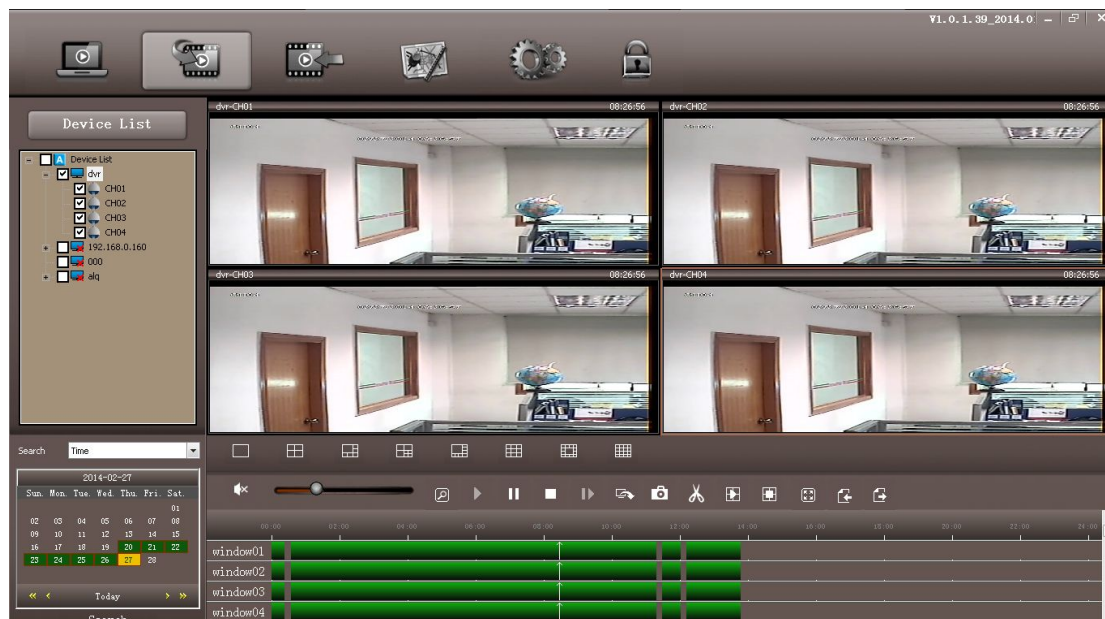
Buttons: OK, Cancel

After finish adding, right click the new-added device, Click all the Channel and open to remote control

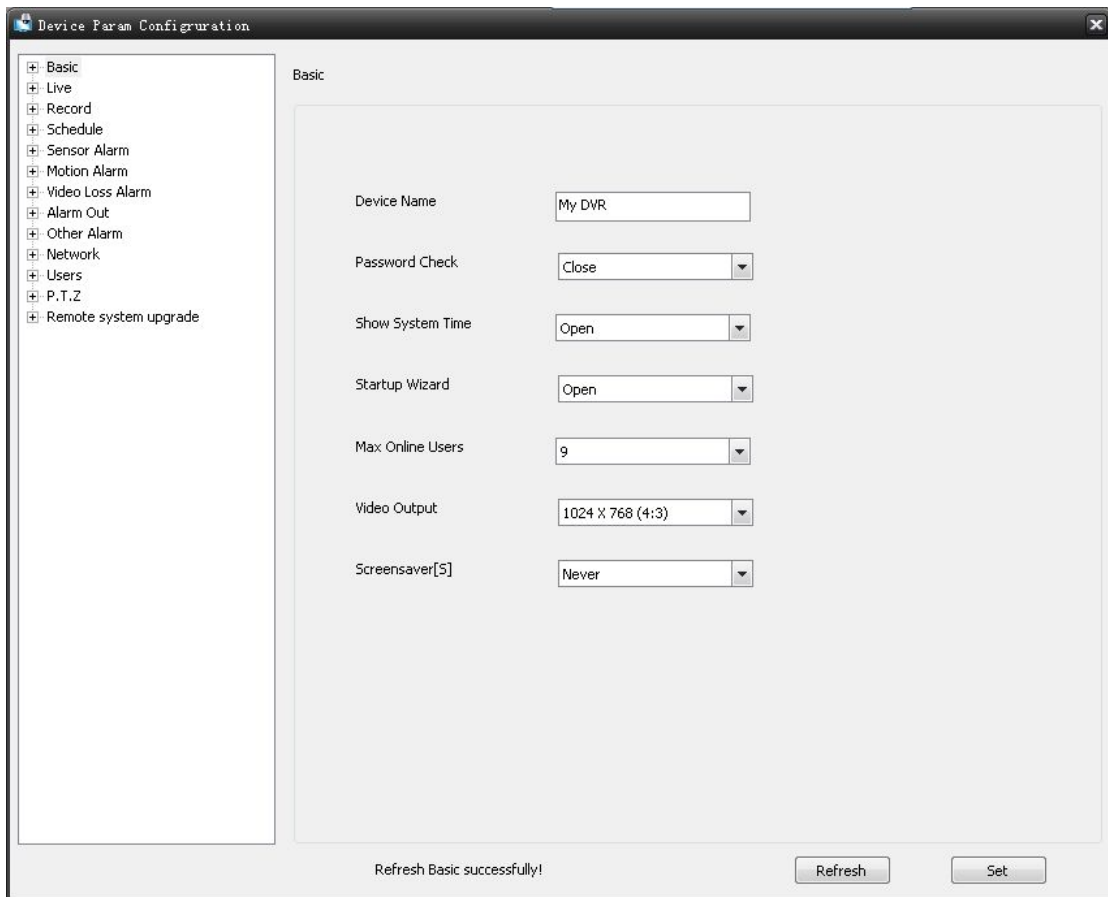
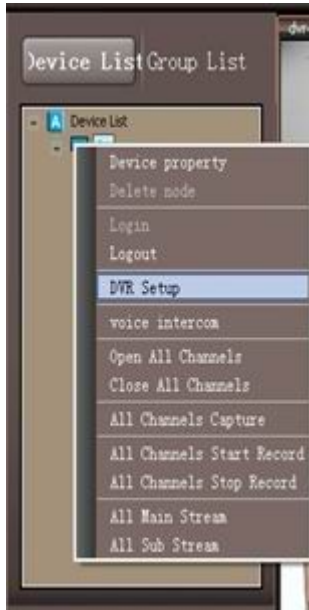
The Function Key in Live View:

Key	Name
	Live View
	Remote Playback
	Local Playback
	E-Map
	Config
	(Screen) Lock
	PTZ
	Preset Point Setting
	Cruise
	Video (Adjustment)

Remote Playback



Right click the added device, and click “DVR Setup”, as the picture below.



Chapter 5 Mobile Surveillance

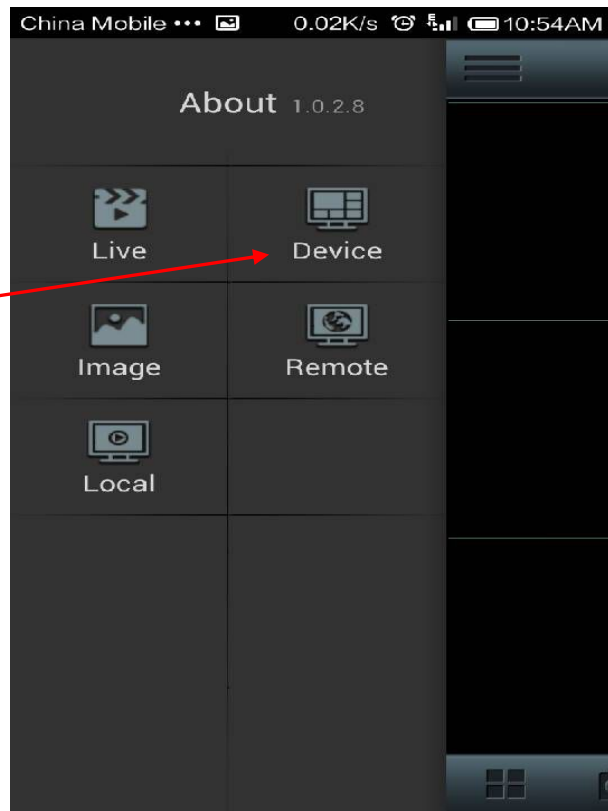
Android for Example, Apple App is Similar to this

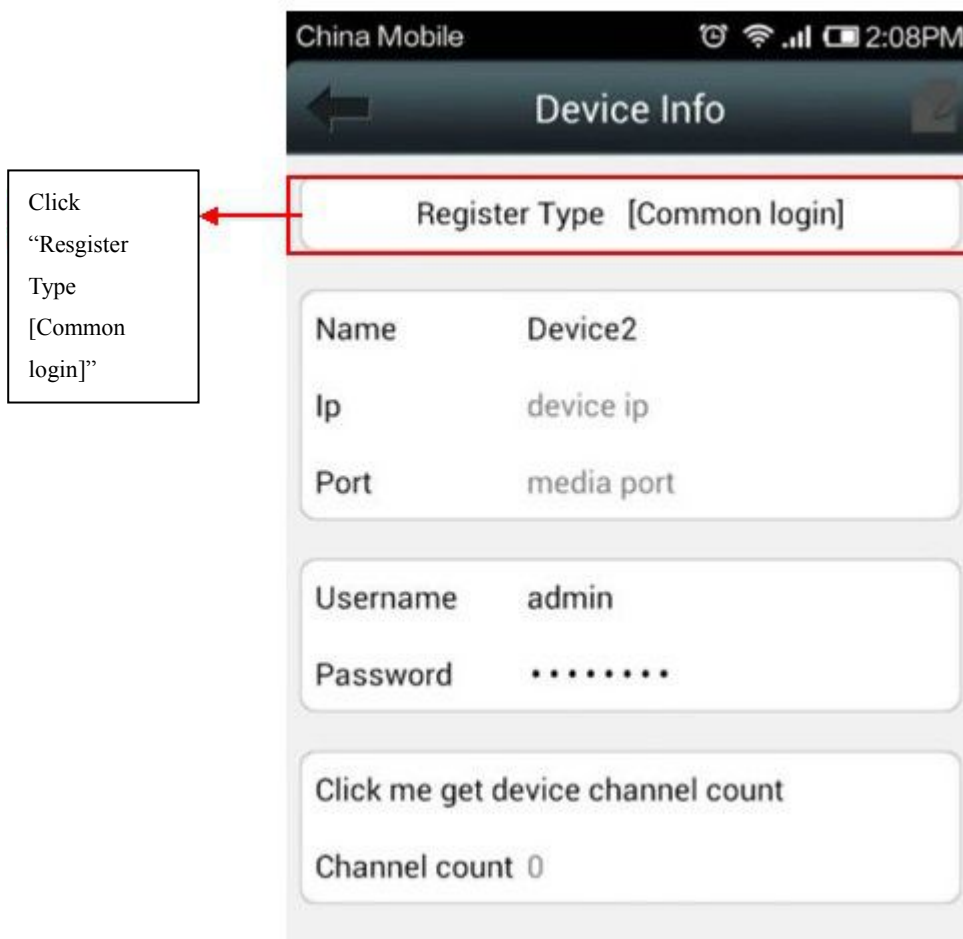
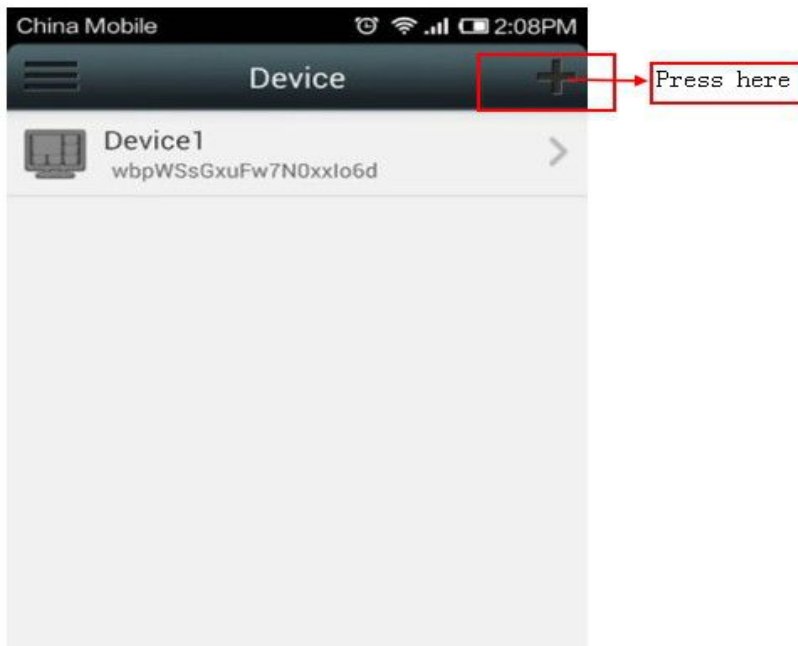
1. Please download “VIDEODEFENCEV2” from Google Play or App Store

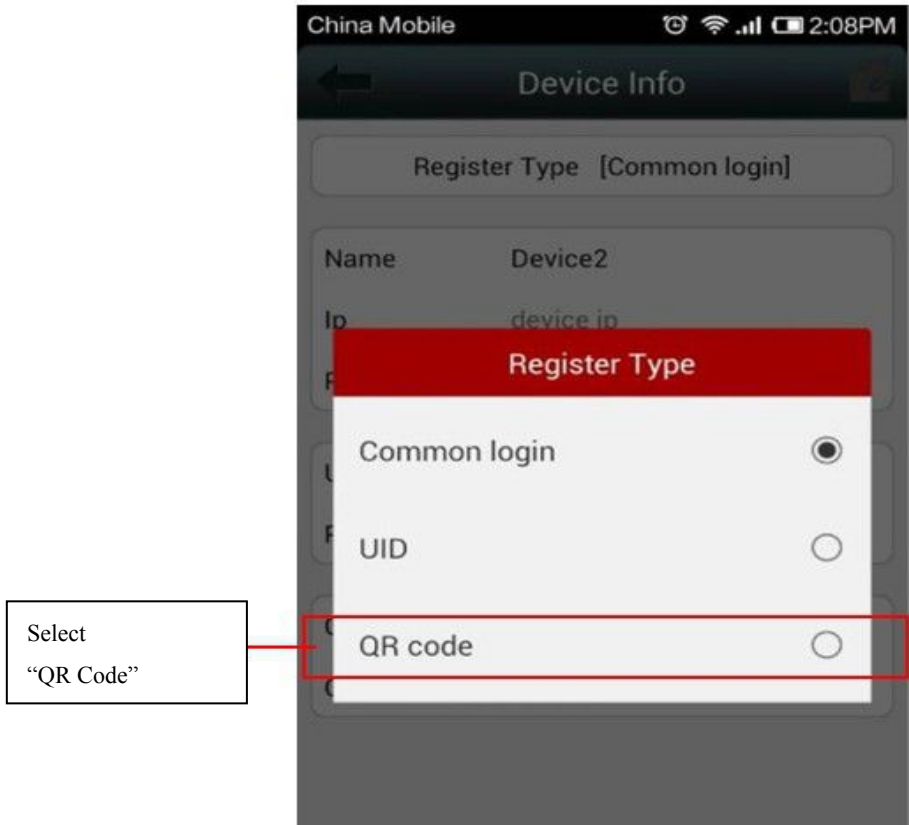
Download “VIDEODEFENCEV2” from
Google Play

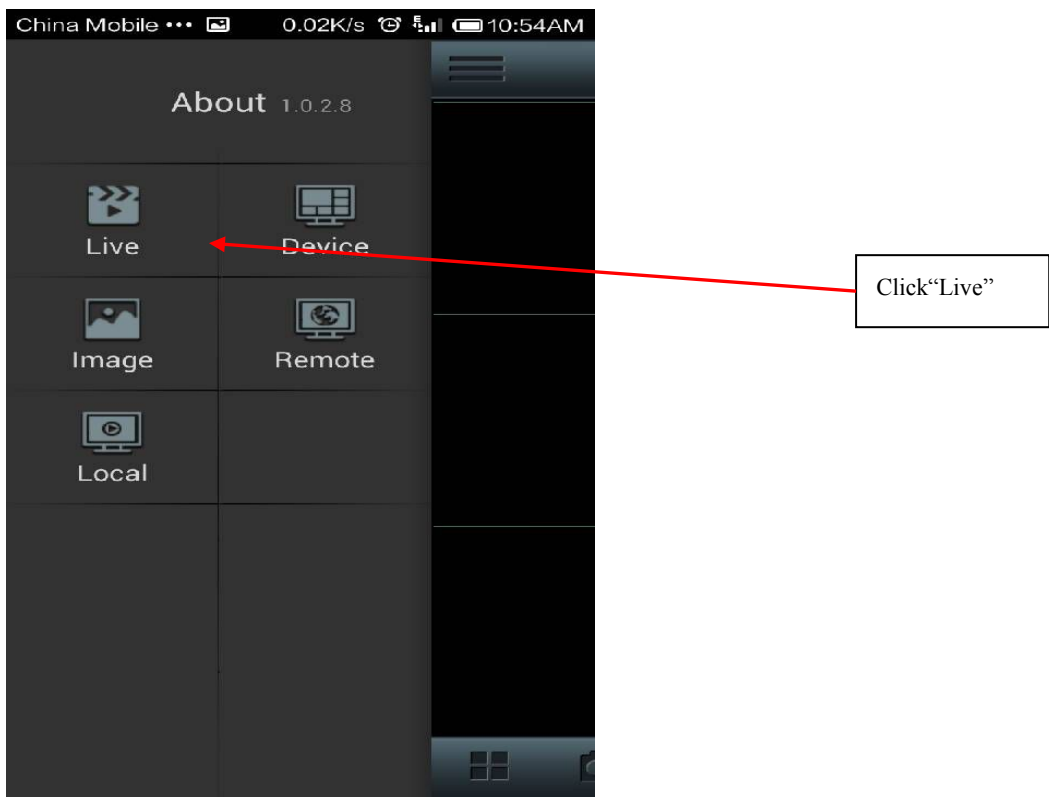


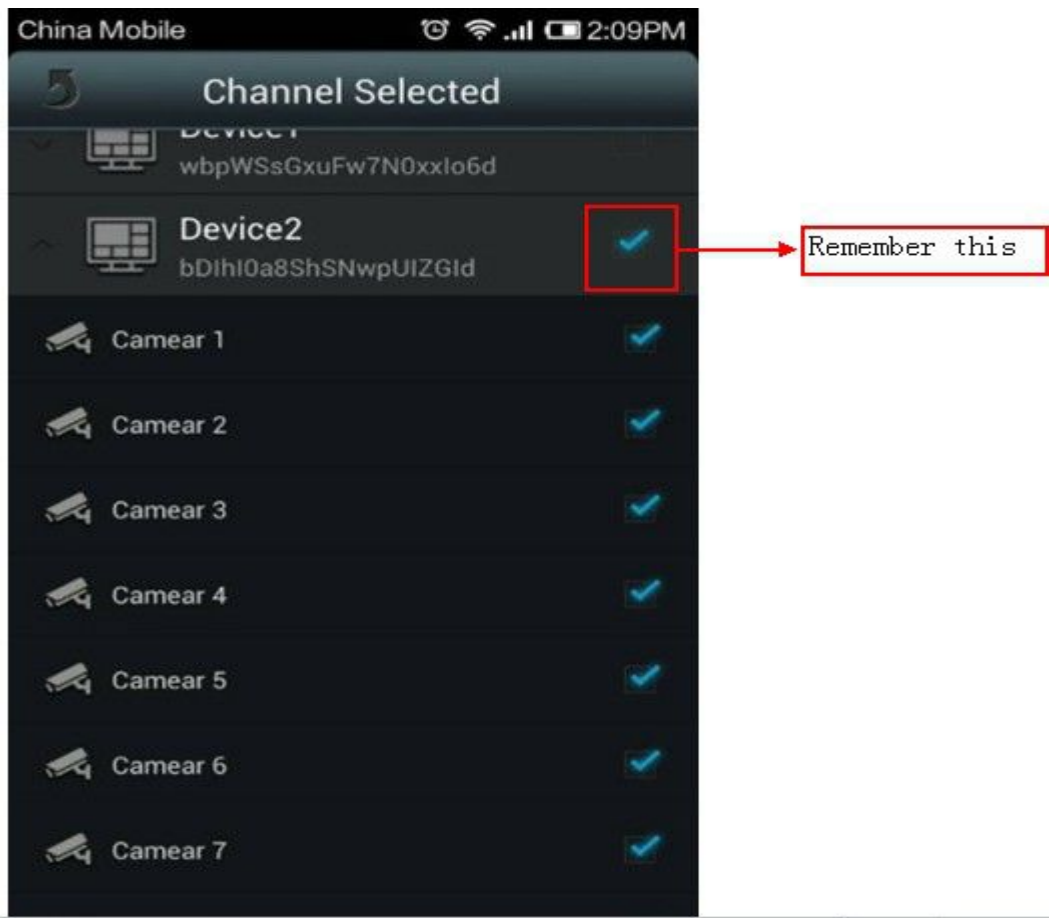
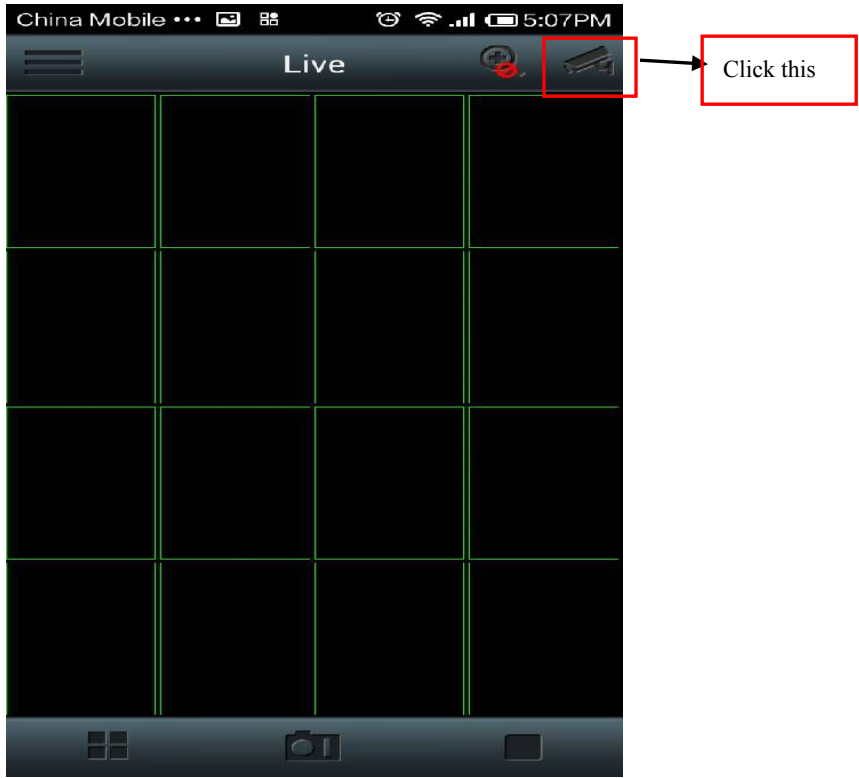
Click “Device”

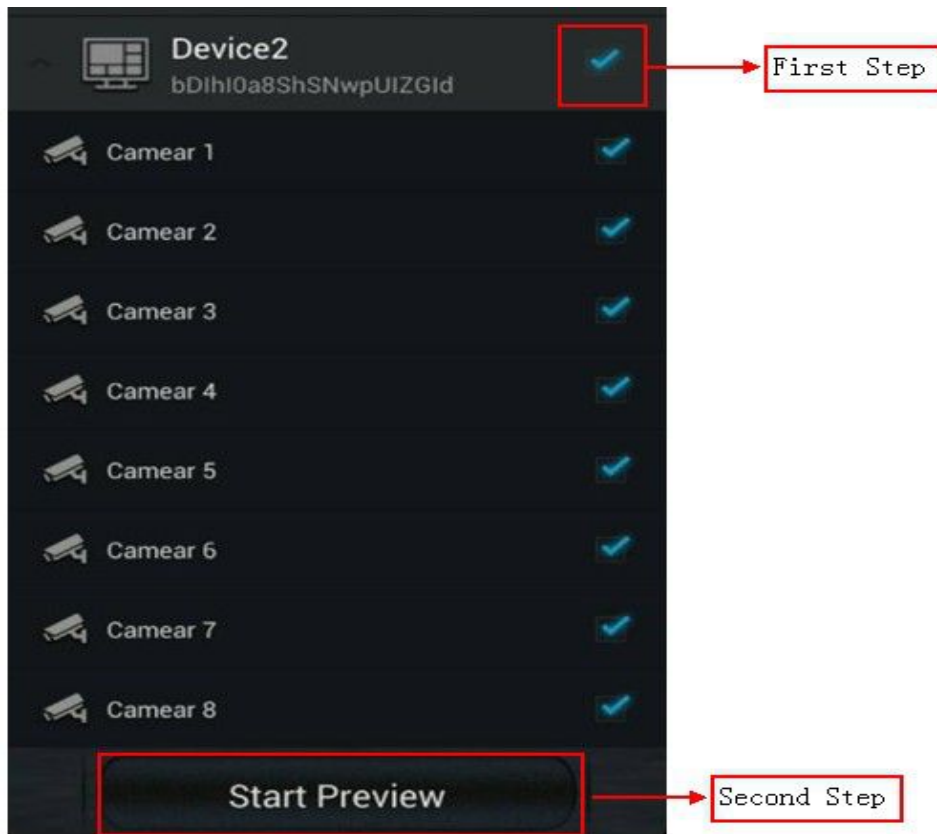












Chapter 6 Q & A

1. Q: The DVR can not detect HDD

A: Please check the HDD cable and the power cable whether is in connection to DVR, or the Main board' s HDD Port whether is in good condition. If yes, please check the HDD whether is the support type to the DVR, please refer to the specification.

2. Q: Forget the password and can' t access into system after chang the password.

A: When you forget the login password, please ask technical assistance from technician. A safe ,easily remembered password is recommended.

3. Q: No video signal or abnormal view shows on the Monitor while the DVR and camera in good connection and power supply.

A: Please check the BNC connection status, or wether the cable is in aging , or whether the resolution (NTSC/PAL) math or not.

4. Q: The DVR radiating effect

A: The DVR will produce heat while it' s running, please put the DVR in a safe and good ventilating place to avoid any bad effect causing by longterm work in high temperature environment .

5. Q: Why the remote control doesn' t work while the the remote view and the front panel button is working normally.

A: Pls make sure the remote control and the DVR IR receiver must be aligned while operating. If remote control still not working, please check the battery condition. If it' s the the problems above, please check whether the remote control is broken or not.

6. Q: Can the DVR support PC HDD if it have been install into DVR?

A: The HDD can be used if it is our system support type, but please be noted that all the file will be loss once the DVR runs.

7. Q: Can the DVR keep recording and playback at the same time?

A: Yes, it can. Our DVR system support to record and playback at the same time.

8. Q: Can I delete some record file in the DVR HDD?

A: For safety, we suggest no to delete some record file, user can format the HDD if he need to delete all the record

9. Q: Why I can not login the DVR CMS?

A: Please check the network connection and the setting is correct or not, or whether RJ-45 port is in good connection, or the user name or password for network login is correct or not.

10. Q: Why there is a temporary stutter while remote live viewing.

A: It' s normal thing if it stutter within 5 second temporally

11. Q: Can not find any record information while need to playback

A: Please check the HDD whether in good connection with the DVR, or the system time is correct or not. If this still happen after setting and restart the system, please check the HDD is damaged or not.

12. Q: After setting, the PTZ can not be controlled.

A: Please check the following reasons:

① PTZ Camera fault

- ② The PTZ decoder setting, connection, installation are incorrect.
- ③ The DVR PTZ setting is incorrect.
- ④ The PTZ decoder don' t match to the DVR protocol ;
- ⑤ The PTZ decoder don' t match the device address;
- ⑥ While it connect with multi-decoder, you need to add a resistance of 120 ohms at the end of the PTZ decoder line A,B, to eliminate reflection and impedance matching. Otherwise it will cause the PTZ control instability.

13. Q: Why the Motion Detection function is not working

A: Please check the Motion Detection setting , level of sensitive are correct or not.

14. Q: Why the Alarm is not working?

A: Please check the alarm setting, alarm port, alarm input are correct or not.

15. Q: Why the DVR keep buzzer?

A: Please check the relevant Alarm setting, the Motion Detection is enable or not, I/O Alarm whether set as "NC" , and the relevant Disk Alarm setting.

16. Q: After connected to BNC, DVR can display video but the menu, mouse, front panel button and remote control are all unavailable.

A: Connect VGA output : change the output to "CVBS" in "main menu-basic setup--system" and then connect BNC output. If no VGA displayer, please press the front panel "menu" button for about 15s till system switching to BNC output mode automatically..

17. Q: How to do if forgetting password.

A: If the modified password is lost , you can press the front panel "menu" button for about 15s to restore the factory default. Factory default password is 0000 0000.

18. Q: If DVR always happens reboot or stops at the turn on logo and can' t enter into the system, how to do?

A: First of all, take the HDD out and check the problem solved or not. If problem solved, then it should be the HDD' s error and formating the HDD is the solution. If problem still exist, please connect seller or supplier for latest upgrading software

19. Q: Connected with VGA or BNC (CVBS definition) output, DVR shows logo but no image displays after entering system. How to do?

A: Connect the DVR with HDMI displayer, then alter the definition to VGA or BNC via it.

FYI: The suitable definition of BNC is CVBS ; HDMI is 1920*1080 ; VGA are the left options.

- ▲ Nothing contained in the manual attached to this product shall be duplicated, disseminated, transcribed or stored in any retrieval system or translated into any other language without written consent.
- ▲ The product specifications and information contained in this manual are for reference only, and the contents thereof are subject to updating without notice.
- ▲ We assume no responsibility for any damage arising from the improper use of this product. The product names mentioned in this manual are intended for identification only, and may also be registered trademarks or copyrights owned by other companies.
- ▲ The product color provided in this marketing package may differ from the color shown on the original package. The pictures are for reference only. The technical specifications are subject to change without notice. The accessories available may differ from market to market. Please consult your local dealer.
- ▲ This manual has been checked carefully but any spelling or technical error is not precluded. Such error or omission will be corrected in the new version. We have the right to modify any and all information contained in this manual without notice.